

Exhibit 2



## PAVEMENT DESIGN MANUAL

CITY OF WICHITA FALLS, TEXAS  
PUBLIC WORKS DEPARTMENT  
1300 SEVENTH STREET  
WICHITA FALLS, TEXAS 76301

Approved by: \_\_\_\_\_  
Russell Schreiber, P.E., Public Works Director

Effective Date: \_\_\_\_\_

## TABLE OF CONTENTS

### 1.0 INTRODUCTION

#### 1.1 Purpose and Scope

### 2.0 DESIGN CRITERIA

#### 2000 PAVEMENT STANDARDS

- 2000 Concrete Pavement Section
- 2010 Asphalt Pavement Section
- 2040 Alley Pavement Section

#### 2050 CONSTRUCTION JOINTS

- 2050 Construction Joint
- 2051 Expansion Joint
- 2052 Sawed Contraction Joint
- 2053 Existing Pavement - Tie-In Joint
- 2060 Spacing Diagram for Joints
- 2070 Terminal Anchor for Concrete Pavement
- 2071 Terminal Anchor with Expansion Joint for Concrete Pavement

#### 2100 CURBS, GUTTERS, AND RAMPS

- 2120 6" Curb and Gutter
- 2120 Standard Sidewalk - Handicap Ramp - Type 1
- 2120 Standard Sidewalk - Handicap Ramp - Type 2
- 2121 Curb and Gutter – Mountable
- 2121 Perpendicular Curb Ramp - Type 1 and Type 2
- 2122 Perpendicular Curb Ramp - Type 3 and Type 4
- 2123 Directional Ramp with Radius - Type 5
- 2124 Standard Placement of Accessible Ramp - Type A
- 2124 Standard Profile of Accessible Ramp - Type A
- 2125 Standard Placement of Accessible Ramp - Type B

- 2125 Standard Profile of Accessible Ramp - Type B
- 2126 General Notes for Handicap Ramps
- 2130 Concrete Valley Gutter

**2140**

**DRIVE APPROACHES**

- 2140 Residential Drive Approach - Concrete Street
- 2145 Residential Drive Approach - Asphalt Street
- 2150 Commercial Drive Approach - Concrete Street
- 2155 Commercial Drive Approach - Asphalt Street
- 2160 Alley Approach
- 2165 Residential Drive Approach - With Mountable Curb
- 2170 Drive Approach - Rural Street
- 2180 Residential - Approach Locations
- 2180 Reinforced Concrete Retaining Wall - Integral with Sidewalk
- 2190 Dead End Street - Barricade Detail

**2200**

**SIDEWALKS, TRAILS, AND CROSSWALKS**

- 2200 Sidewalk
- 2210 Circle Trail Connection
- 2400 Crosswalk Striping Plan

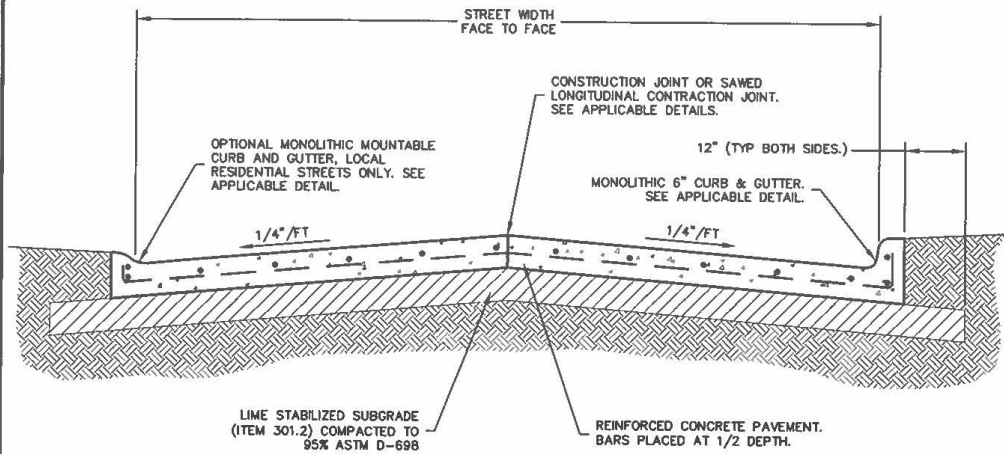
## **1.0 INTRODUCTION:**

### **1.1 Purpose and Scope**

The development of this design manual is authorized by the City of Wichita Falls' Subdivision and Development Regulations Ordinance to protect and provide for the safety and welfare of the general public and to ensure the proper development of public infrastructure within the City and its extraterritorial jurisdiction. This manual establishes standard design guidance for pavement development and construction processes within the jurisdiction of the City and is intended to encourage a greater uniformity in developing plans for the City's pavement facilities. The design standards described in the following pages are intended to serve as guidelines for the development of pavement structures for local government review and approval purposes; however, the responsibility for the adequacy and effectiveness of the actual design remains with the design engineer and sound engineering judgment must always be applied. Users of this manual should be knowledgeable and experienced in the theory and application of pavement engineering principles. Any deviation from the requirements of this manual must be approved by the Director of Public Works or designee.

## **2.0 DESIGN CRITERIA:**





## GENERAL NOTES:

1. CONSTRUCT EXPANSION AND CONTRACTION JOINTS AT INTERVALS SHOWN ON SPACING DIAGRAM FOR JOINTS. SEE APPLICABLE DETAILS.
2. ALL CONCRETE MUST BE CLASS "C" (COMPRESSIVE STRENGTH OF 3600 PSI @ 28 DAYS).
3. SEE PORTLAND CEMENT CONCRETE PAVEMENT, ITEM 303 OF THE STANDARD SPECIFICATIONS.
4. ALL EXPOSED CONCRETE SURFACES MUST BE CURED IN ACCORDANCE WITH ITEM 303.5.7 OF THE STANDARD SPECIFICATIONS.
5. BACKFILL FROM BACK OF CURB TO RIGHT OF WAY LINE MUST BE COMPACTED TO 90% OF ASTM D-698.
6. SUB GRADE PREPARATION MUST CONSIST OF LIME STABILIZATION IN ACCORDANCE WITH ITEM 301.2 OF THE STANDARD SPECIFICATIONS, APPLIED AT A RATE OF 30 LBS./SQ.YD., COMPACTED TO 95% ASTM D-698.
7. FLEXIBLE BASE OF SAME THICKNESS MEETING REQUIREMENTS OF ITEM 301.5 OF THE STANDARD SPECIFICATIONS MAY BE SUBSTITUTED FOR LIME STABILIZED SUBGRADE.

STREET CLASSIFICATION	STREET WIDTH	PAVEMENT THICKNESS	SUBGRADE THICKNESS	STEEL REINFORCING
LOCAL RESIDENTIAL STREET	30' FACE TO FACE	6" CONCRETE	6" TREATED SUBGRADE	#4 BARS @ 18" O.C.E.W.
LOCAL INDUSTRIAL / COMMERCIAL STREET	36' FACE TO FACE	7" CONCRETE	6" TREATED SUBGRADE	#4 BARS @ 18" O.C.E.W.
MINOR & MAJOR COLLECTORS & ARTERIALS	GREATER THAN 36' FACE TO FACE	8" CONCRETE	6" TREATED SUBGRADE	#5 BARS @ 18" O.C.E.W.

**CONCRETE  
PAVEMENT SECTION**  
NOT TO SCALE

PAVEMENT STANDARDS

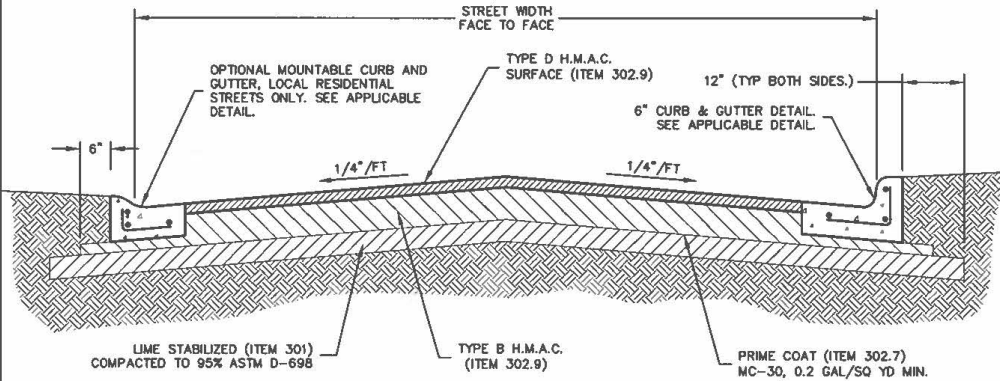
CITY OF WICHITA FALLS, TX  
ENGINEERING DIVISION

SEPTEMBER 2023

CONCRETE  
PAVEMENT SECTION

DETAIL NO. 2000

DISCLAIMER: The use of this standard is governed by the City of Wichita Falls Engineering Department. No warranty of any kind is made by the City of Wichita Falls for any purpose whatsoever. The City of Wichita Falls assumes no responsibility for the conversion of this standard to other formats for incorrect results or damages resulting from its use.



GENERAL NOTES:

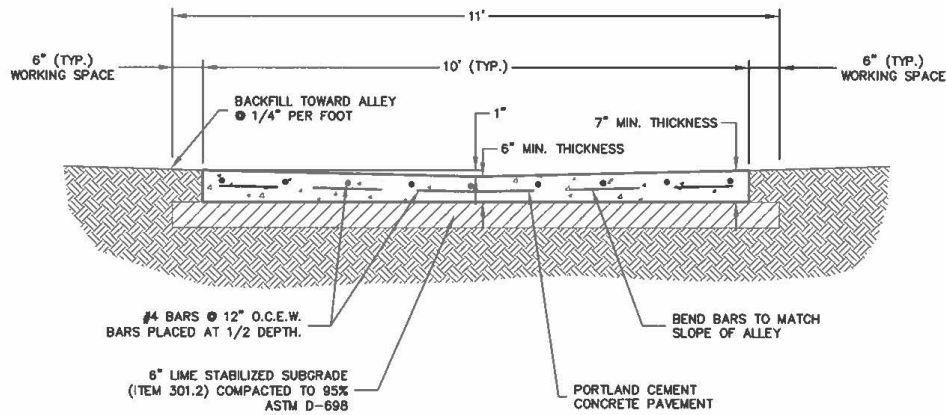
1. AFTER COMPACTION, THE HMAC MUST BE WITHIN 1/4" TO 1/2" ABOVE TOP OF LIP OF GUTTER.
2. SEE ASPHALT PAVEMENT, ITEM 302 OF THE STANDARD SPECIFICATIONS.
3. BACKFILL FROM BACK OF CURB TO RIGHT OF WAY LINE MUST BE COMPACTED TO 90% OF ASTM D-698.
4. SUB GRADE PREPARATION MUST CONSIST OF LIME STABILIZATION IN ACCORDANCE WITH ITEM 301.2 OF THE STANDARD SPECIFICATIONS, APPLIED AT A RATE OF 30 LBS./SQ.YD., COMPACTED TO 95% ASTM D-698.
5. FLEXIBLE BASE OF SAME THICKNESS, MEETING REQUIREMENTS OF ITEM 301.5 OF THE STANDARD SPECIFICATIONS, MAY BE SUBSTITUTED FOR LIME STABILIZED SUBGRADE.
6. THE TYPE "B" ASPHALT UNDER THE CURB AND GUTTER MAY BE ELIMINATED BY ADDITIONAL THICKNESS OF CONCRETE GUTTER TO MATCH ASPHALT PAVEMENT SECTION.

STREET CLASSIFICATION	SURFACE COURSE THICKNESS	BASE COURSE THICKNESS	SUBGRADE THICKNESS
LOCAL RESIDENTIAL STREETS	2" TYPE D H.M.A.C.	4" TYPE B H.M.A.C.	6" TREATED SUBGRADE
LOCAL INDUSTRIAL / COMMERCIAL STREETS	2" TYPE D H.M.A.C.	6" TYPE B H.M.A.C.	6" TREATED SUBGRADE
ARTERIAL STREETS MINOR & MAJOR COLLECTOR STREETS	2" TYPE D H.M.A.C.	8" TYPE B H.M.A.C.	8" TREATED SUBGRADE

**ASPHALT  
PAVEMENT SECTION**  
NOT TO SCALE

DISCLAIMER: The use of this standard is governed by the City of Wichita Falls Engineering Department. No warranty of any kind is made by the City of Wichita Falls for any purpose whatsoever. The City of Wichita Falls assumes no responsibility for the conversion of this standard to other formats for incorrect results or damages resulting from its use.

PAVEMENT STANDARDS	CITY OF WICHITA FALLS, TX ENGINEERING DIVISION SEPTEMBER 2023	ASPHALT PAVEMENT SECTION
		DETAIL NO. 2010



GENERAL NOTES:

1. SEE ALLEY PAVING ITEM 303.6 OF THE STANDARD SPECIFICATIONS.
2. SUB GRADE PREPARATION MUST CONSIST OF 6" LIME STABILIZATION IN ACCORDANCE WITH ITEM 301.2 OF THE STANDARD SPECIFICATIONS, APPLIED AT A RATE OF 30 LBS./ PER SQ.YD., COMPACTED TO 95% ASTM D-698.
3. 6" INCHES OF FLEXIBLE BASE MEETING THE REQUIREMENTS OF ITEM 301.5 OF THE STANDARD SPECIFICATIONS, MAY BE SUBSTITUTED FOR LIME STABILIZED SUBGRADE.
4. ALL CONCRETE MUST BE CLASS "C" (COMPRESSIVE STRENGTH OF 3600 PSI @ 28 DAYS).
5. ALL EXPOSED CONCRETE SURFACES MUST BE CURED IN ACCORDANCE WITH ITEM 303.5.7 OF THE STANDARD SPECIFICATIONS.
6. EXPANSION JOINTS MUST BE PLACED AT EACH END OF THE ALLEY AND AT MAX. SPACING OF 300'.
7. BACKFILL ADJACENT TO CONCRETE EDGES TO A MINIMUM OF 90% STANDARD PROCTOR (ASTM D-698) IN 6" INCH LIFTS.
8. CONSTRUCT SAWED CONTRACTION JOINTS AT 15' INTERVALS.

ALLEY  
PAVEMENT SECTION  
NOT TO SCALE

DISCLAIMER:

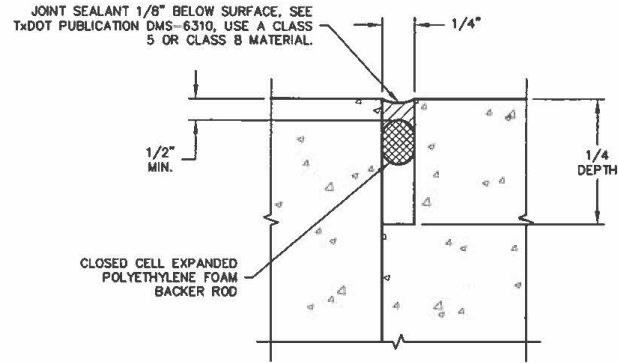
The use of this standard is governed by the City of Wichita Falls Engineering Department. No warranty of any kind is made by the City of Wichita Falls for any purpose whatsoever. The City of Wichita Falls assumes no responsibility for the conversion of this standard to other formats for incorrect results or damages resulting from its use.

PAVEMENT STANDARDS

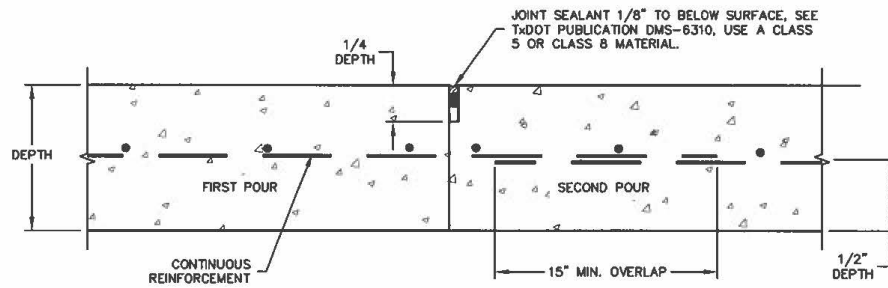
CITY OF WICHITA FALLS, TX  
ENGINEERING DIVISION  
SEPTEMBER 2023

ALLEY  
PAVEMENT SECTION

DETAIL NO. 2040



### JOINT SEALANT



#### GENERAL NOTES:

1. SEE CONSTRUCTION JOINTS, ITEM 303.5.4.4 OF THE STANDARD SPECIFICATIONS.

### CONSTRUCTION JOINT

NOT TO SCALE

DISCLAIMER:

The use of this standard is governed by the City of Wichita Falls Engineering Department. No warranty of any kind is made by the City of Wichita Falls for any purpose whatsoever. The City of Wichita Falls assumes no responsibility for the conversion of this standard to other formats for incorrect results or damages resulting from its use.

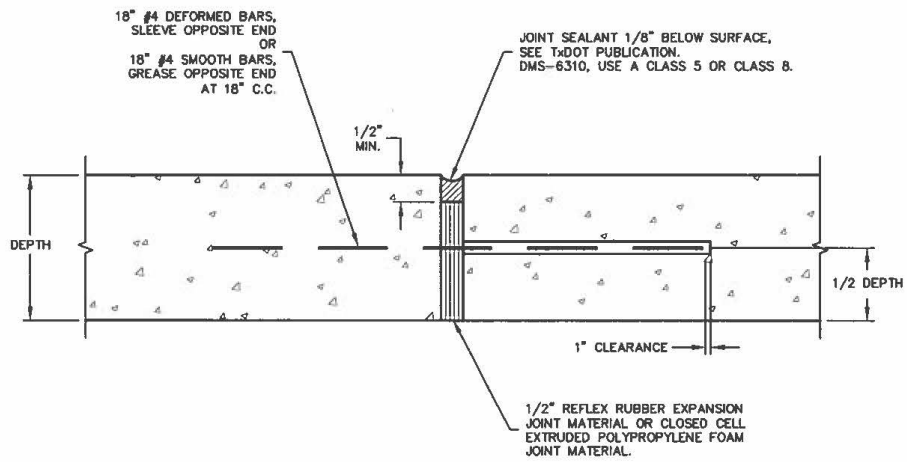
PAVEMENT STANDARDS

CITY OF WICHITA FALLS, TX  
ENGINEERING DIVISION

SEPTEMBER 2023

CONSTRUCTION JOINT

DETAIL NO. 2050



GENERAL NOTES:

1. SEE EXPANSION JOINTS, ITEM 303.5.4.2 OF THE STANDARD SPECIFICATIONS.
2. DOWEL BARS MUST BE ADEQUATELY BRACED WITH DOWEL BASKETS TO ASSURE THEY WILL BE MAINTAINED PERPENDICULAR AND LEVEL TO JOINT DURING PLACEMENT OF CONCRETE.

EXPANSION JOINT

NOT TO SCALE

DISCLAIMER:

The use of this standard is governed by the City of Wichita Falls Engineering Department. No warranty of any kind is made by the City of Wichita Falls for any purpose whatsoever. The City of Wichita Falls assumes no responsibility for the conversion of this standard to other formats for incorrect results or damages resulting from its use.

PAVEMENT STANDARDS

CITY OF WICHITA FALLS, TX  
ENGINEERING DIVISION

SEPTEMBER 2023

EXPANSION JOINT

DETAIL NO. 2051

JOINT SEALANT 1/8" BELOW SURFACE, SEE  
TXDOT PUBLICATION DMS-6310, USE A CLASS  
5 OR CLASS 8 MATERIAL.

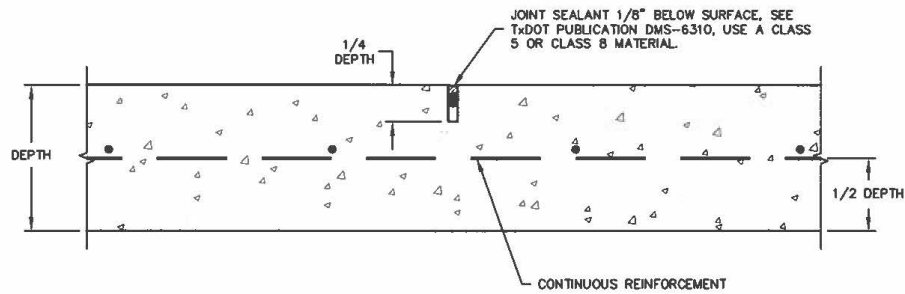
1/2" MIN.

1/4"

1/4  
DEPTH

CLOSED CELL EXPANDED  
POLYETHYLENE FOAM  
BACKER ROD

### JOINT SEALANT



#### GENERAL NOTES:

1. SEE CONTRACTION JOINTS, ITEM 303.5.4.3 OF THE STANDARD SPECIFICATIONS.

### SAWED CONTRACTION JOINT

NOT TO SCALE

DISCLAIMER:

The use of this standard is governed by the City of Wichita Falls Engineering Department. No warranty of any kind is made by the City of Wichita Falls for any purpose whatsoever. The City of Wichita Falls assumes no responsibility for the conversion of this standard to other formats for incorrect results or damages resulting from its use.

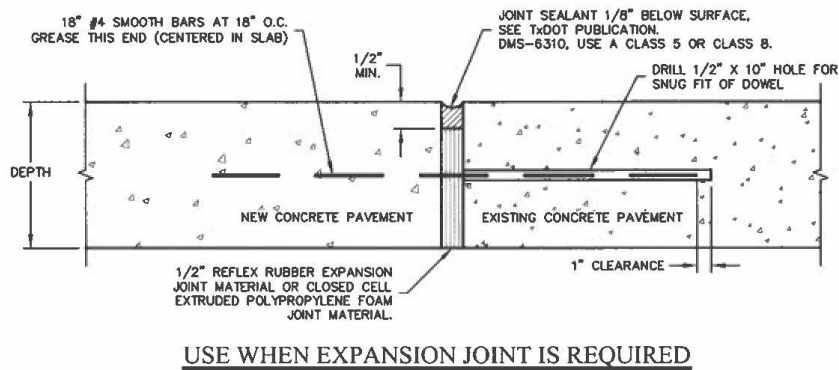
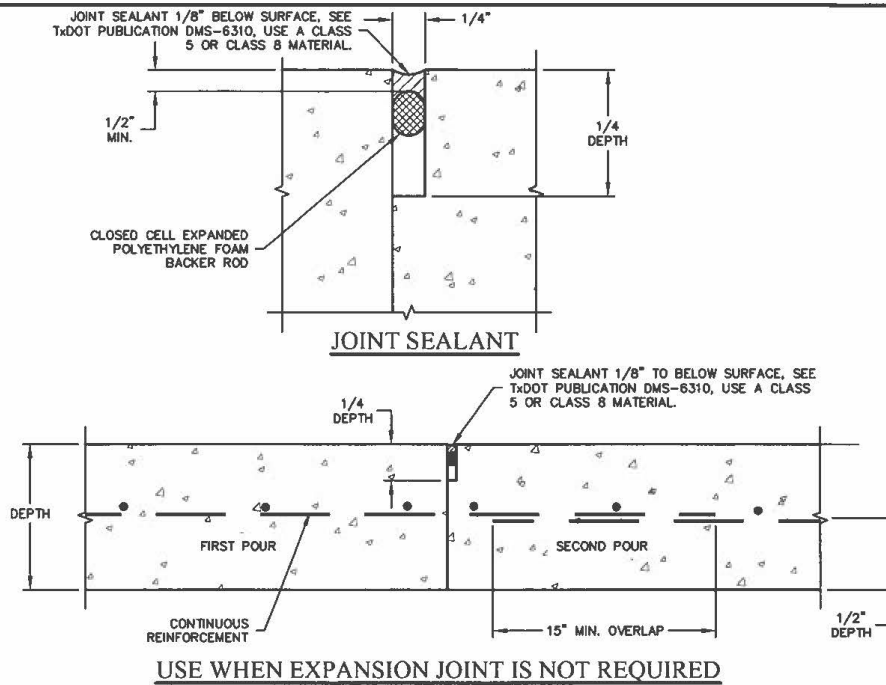
PAVEMENT STANDARDS

CITY OF WICHITA FALLS, TX  
ENGINEERING DIVISION

SEPTEMBER 2023

SAWED CONTRACTION  
JOINT

DETAIL NO. 2052



GENERAL NOTES:

1. IF EXPANSION JOINT IS NOT REQUIRED, INSTALL PER CONSTRUCTION JOINT DETAIL.
2. SEE EXPANSION JOINTS, ITEM 303.5.4.2 OF THE STANDARD SPECIFICATIONS.

**EXISTING PAVEMENT  
TIE-IN JOINT**

NOT TO SCALE

PAVEMENT STANDARDS

CITY OF WICHITA FALLS, TX  
ENGINEERING DIVISION

SEPTEMBER 2023

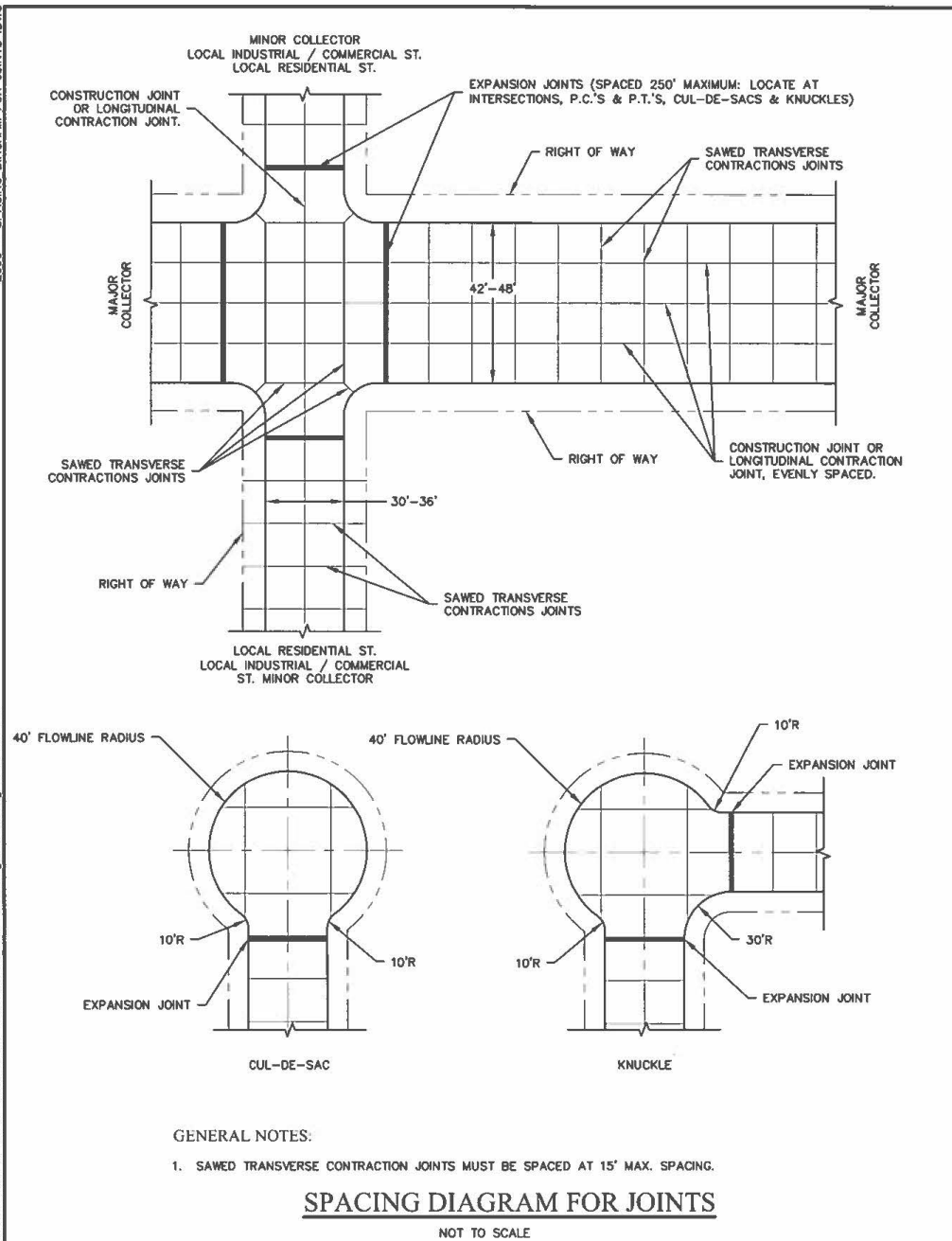
EXISTING PAVEMENT  
TIE-IN JOINT

DETAIL NO. 2053

DISCLAIMER:  
The use of this standard is governed by the City of Wichita Falls Engineering Department. No warranty of any kind is made by the City of Wichita Falls for any purpose whatsoever. The City of Wichita Falls assumes no responsibility for the conversion of this standard to other formats for incorrect results or damages resulting from its use.

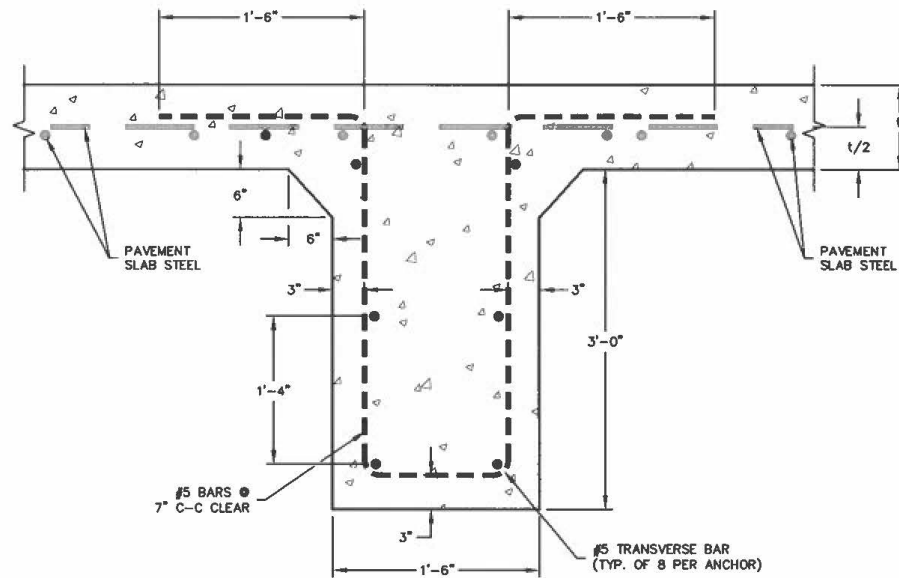
DISCLAIMER:  
The use of this standard is governed by the City of Wichita Falls Engineering Department. No warranty of any kind is made by the City of Wichita Falls for any purpose whatsoever. The City of Wichita Falls assumes no responsibility for the conversion of this standard to other formats for incorrect results or damages resulting from its use.

2060 - SPACING DIAGRAM FOR JOINTS .DWG



PAVEMENT STANDARDS	CITY OF WICHITA FALLS, TX ENGINEERING DIVISION SEPTEMBER 2023	SPACING DIAGRAM FOR JOINTS DETAIL NO. 2060
--------------------	---	---





GENERAL NOTES:

1. DETAILS AS TO PAVEMENT SLAB WIDTH, THICKNESS, AND CROWN CROSS-SLOPE MUST BE AS SHOWN ELSEWHERE ON THE PLANS.
2. THE CONCRETE PAVEMENT SLAB MUST CONTINUE ACROSS THE ANCHOR LUGS AS SHOWN.
3. REINFORCING FOR THE ANCHOR LUGS MUST BE STEEL CONFORMING TO ASTM DESIGNATION A615, GRADE 60 OR A-615, GRADE 60. ALL STEEL IN LUGS AND SUPPORT SLAB MUST BE #5 BARS.
4. SAWCUT TRANSVERSE CONTRACTION JOINTS WILL NOT BE PERMITTED WITHIN THE LIMITS OF THE ANCHOR LUGS WITHOUT THE APPROVAL OF THE ENGINEER.
5. FOR CONCRETE PAVEMENT SECTION SEE APPLICABLE DETAIL.

TERMINAL ANCHOR FOR CONCRETE PAVEMENT

NOT TO SCALE

DISCLAIMER:

The use of this standard is governed by the City of Wichita Falls Engineering Department. No warranty of any kind is made by the City of Wichita Falls for any purpose whatsoever. The City of Wichita Falls assumes no responsibility for the conversion of this standard to other formats for incorrect results or damages resulting from its use.

PAVEMENT STANDARDS

CITY OF WICHITA FALLS, TX  
ENGINEERING DIVISION

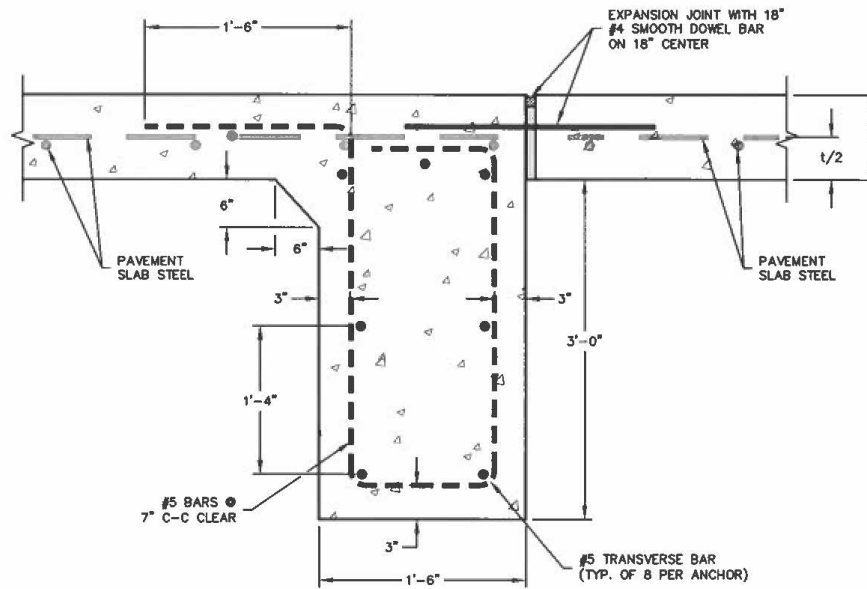
SEPTEMBER 2023

TERMINAL ANCHOR FOR  
CONCRETE PAVEMENT

DETAIL NO. 2070

2071 - TERMINAL ANCHOR WITH EXPANSION JOINT FOR CONCRETE PAVEMENT .DWG

DISCLAIMER: The use of this standard is governed by the City of Wichita Falls Engineering Department. No warranty of any kind is made by the City of Wichita Falls for any purpose whatsoever. The City of Wichita Falls assumes no responsibility for the conversion of this standard to other formats for incorrect results or damages resulting from its use.



GENERAL NOTES:

1. DETAILS AS TO PAVEMENT SLAB WIDTH, THICKNESS, AND CROWN CROSS-SLOPE MUST BE AS SHOWN ELSEWHERE ON THE PLANS.
2. REINFORCING FOR THE ANCHOR LUGS MUST BE STEEL CONFORMING TO ASTM DESIGNATION A615, GRADE 60 OR A-616, GRADE 60. ALL STEEL IN LUGS AND SUPPORT SLAB MUST BE #5 BARS.
3. SAWCUT CONTRACTION JOINTS WILL NOT BE PERMITTED WITHIN THE LIMITS OF THE ANCHOR LUGS WITHOUT THE APPROVAL OF THE ENGINEER.
4. SEE CONCRETE PAVEMENT SECTION AND EXPANSION JOINT. SEE APPLICABLE DETAIL.

**TERMINAL ANCHOR WITH EXPANSION JOINT  
FOR  
CONCRETE PAVEMENT**  
NOT TO SCALE

PAVEMENT STANDARDS

CITY OF WICHITA FALLS, TX  
ENGINEERING DIVISION

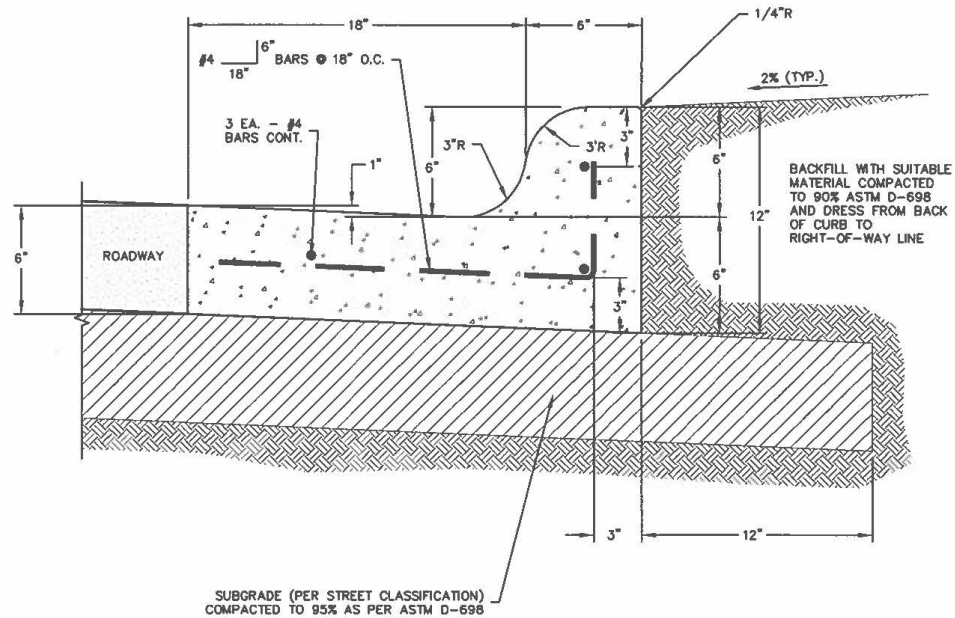
SEPTEMBER 2023

TERMINAL ANCHOR WITH EXPANSION  
JOINT FOR CONCRETE PAVEMENT

DETAIL NO. 2071

DISCLAIMER:  
The use of this standard is governed by the City of Wichita Falls Engineering Department. No warranty of any kind is made by the City of Wichita Falls for any purpose whatsoever. The City of Wichita Falls assumes no responsibility for the conversion of this standard to other formats for incorrect results or damages resulting from its use.

2120 - 6 INCH CURB AND GUTTER .DWG



#### GENERAL NOTES:

1. DOWEL REINFORCEMENT 6" INTO EXISTING CURB AND GUTTER.
2. CONSTRUCT 1/2" EXPANSION JOINTS AT 250' ON CENTER, INTERSECTIONS, PTS & PCS, AND CONTRACTION JOINTS AT 15' ON CENTER.
3. SEE CONCRETE CURB & GUTTER, ITEM 305.1 OF THE STANDARD SPECIFICATIONS.
4. ALL CONCRETE MUST BE CLASS "C" (COMPRESSIVE STRENGTH OF 3600 PSI @ 28 DAYS).
5. SAND WILL NOT BE ACCEPTED AS COMPACTED SUBGRADE. SAND WILL BE ALLOWED FOR LEVEL-UP ONLY. (2" MAX.).
6. MATCH PAVEMENT THICKNESS WHEN PLACED MONOLITHIC WITH CONCRETE PAVEMENT.
7. PROVIDE 1" GUTTER DEPRESSION.

### 6" CURB AND GUTTER

NOT TO SCALE

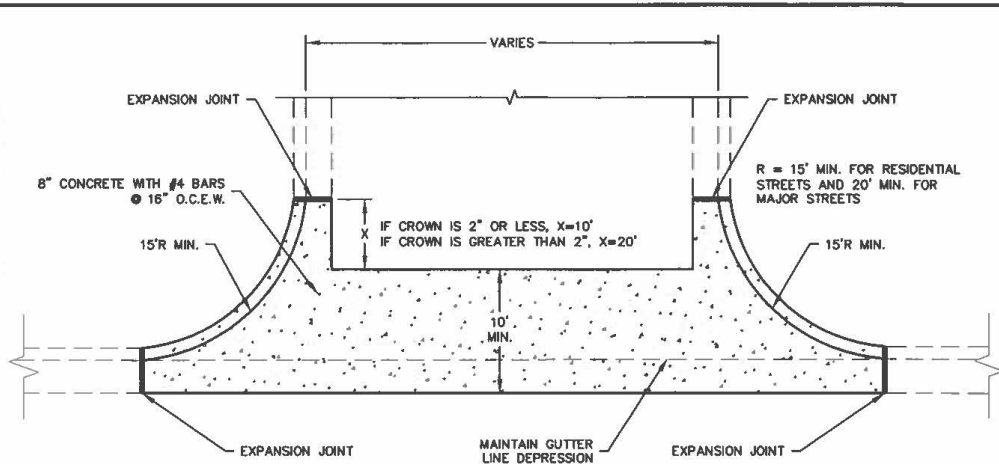
PAVEMENT STANDARDS	CITY OF WICHITA FALLS, TX ENGINEERING DIVISION SEPTEMBER 2023	6" CURB AND GUTTER
		DETAIL NO. 2120



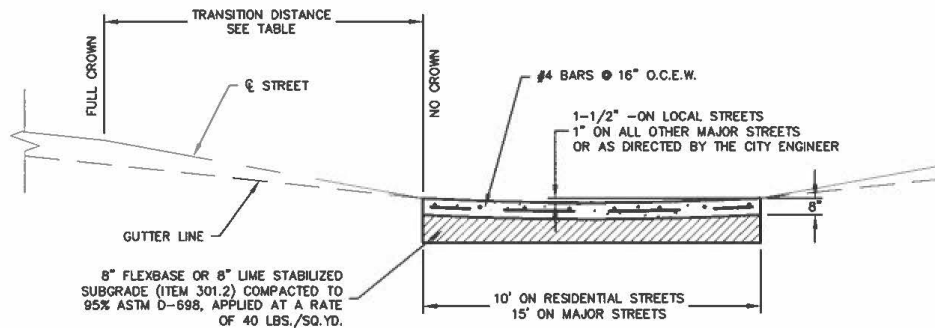
- ## CURB AND GUTTER MOUNTABLE

NOT TO SCALE

PAVEMENT STANDARDS	CITY OF WICHITA FALLS, TX ENGINEERING DIVISION  SEPTEMBER 2023	CURB AND GUTTER MOUNTABLE
		DETAIL NO. 2121



INTERSECTION VALLEY GUTTER



CROWN OF ROADWAY (in.)	TRANSITION DISTANCE (ft.)
0"	0'
1"	10'
2"	20'
3"	30'
4"	40'
5"	50'

MIDSTREET VALLEY GUTTER

GENERAL NOTES:

1. ALL CONCRETE MUST BE CLASS "C" (COMPRESSIVE STRENGTH OF 3600 PSI @ 28 DAYS).
2. ALL EXPOSED CONCRETE SURFACES MUST BE CURED IN ACCORDANCE WITH ITEM 303.5.7 OF THE STANDARD SPECIFICATIONS.

**CONCRETE  
VALLEY GUTTER**  
NOT TO SCALE

DISCLAIMER:

The use of this standard is governed by the City of Wichita Falls Engineering Department. No warranty of any kind is made by the City of Wichita Falls for any purpose whatsoever. The City of Wichita Falls assumes no responsibility for the conversion of this standard to other formats for incorrect results or damages resulting from its use.

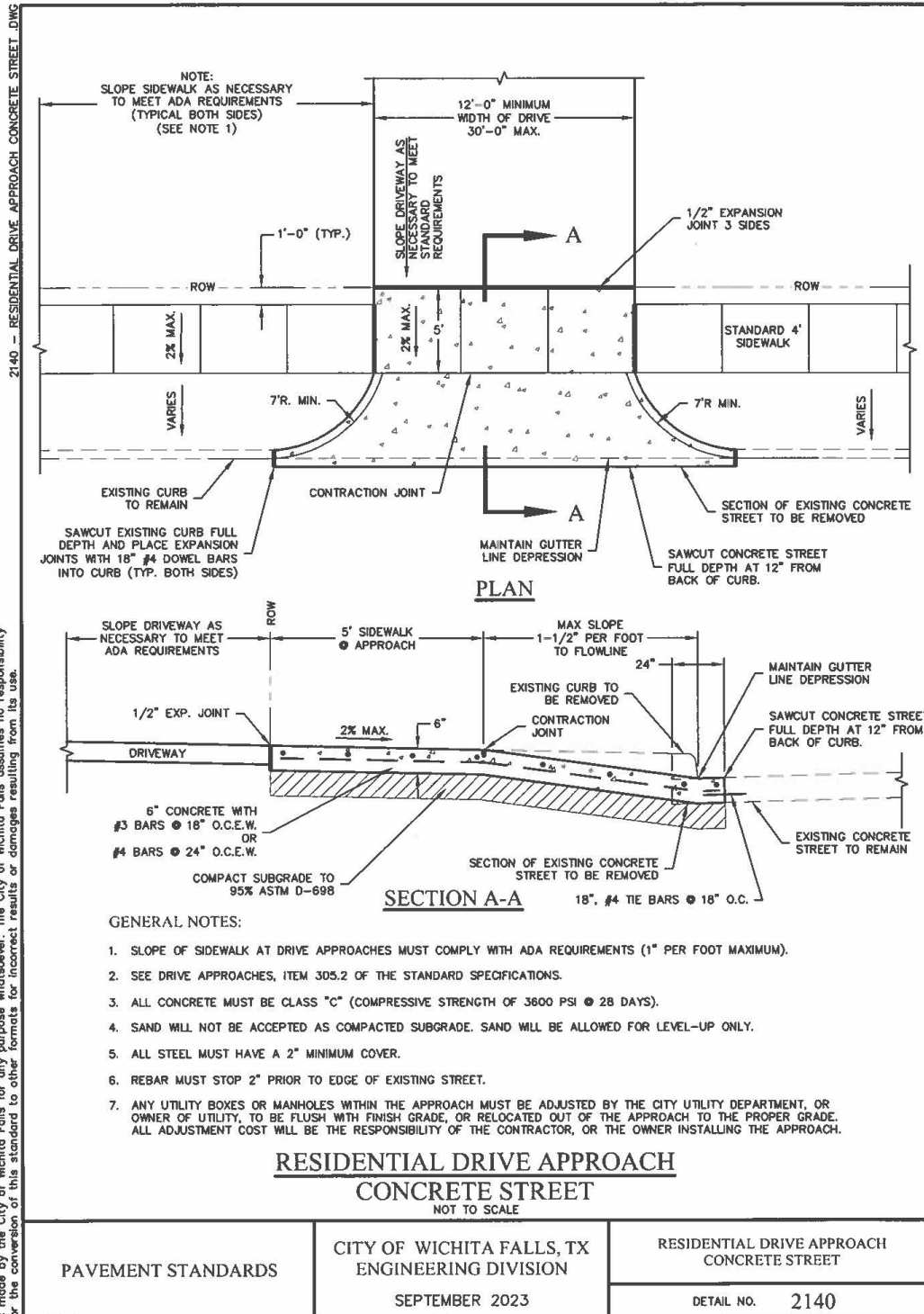
PAVEMENT STANDARDS

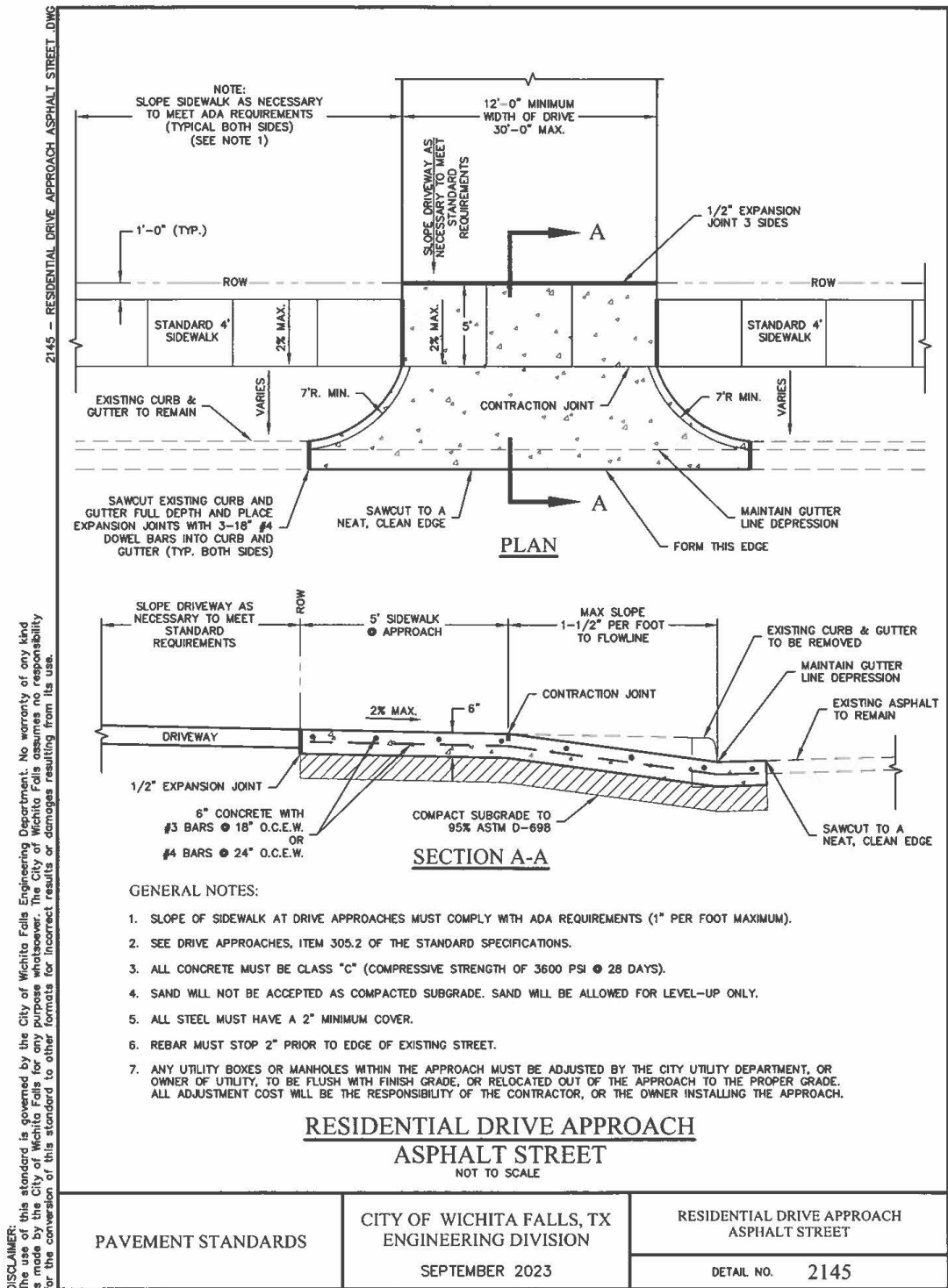
CITY OF WICHITA FALLS, TX  
ENGINEERING DIVISION  
SEPTEMBER 2023

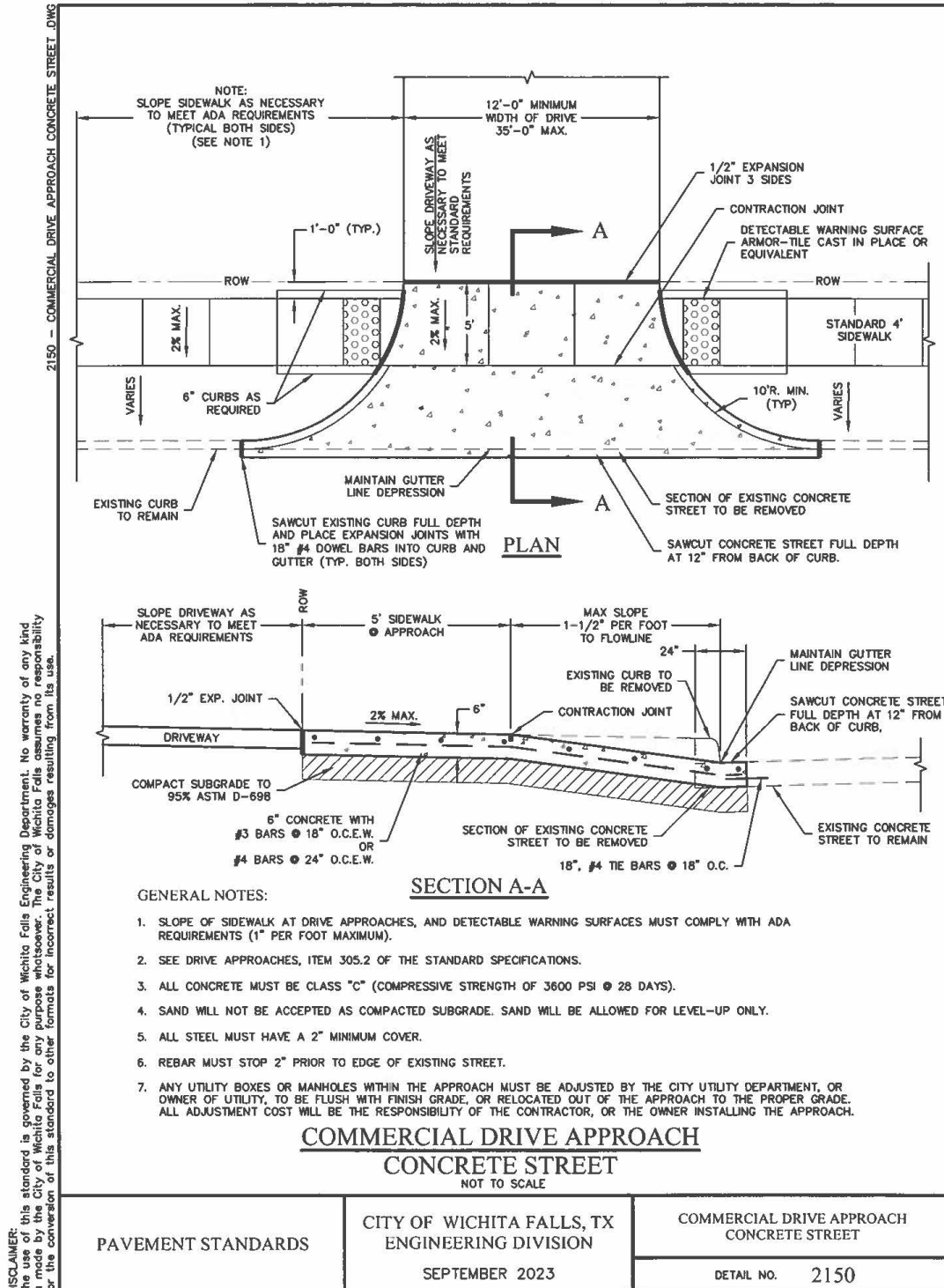
CONCRETE  
VALLEY GUTTER

DETAIL NO. 2130

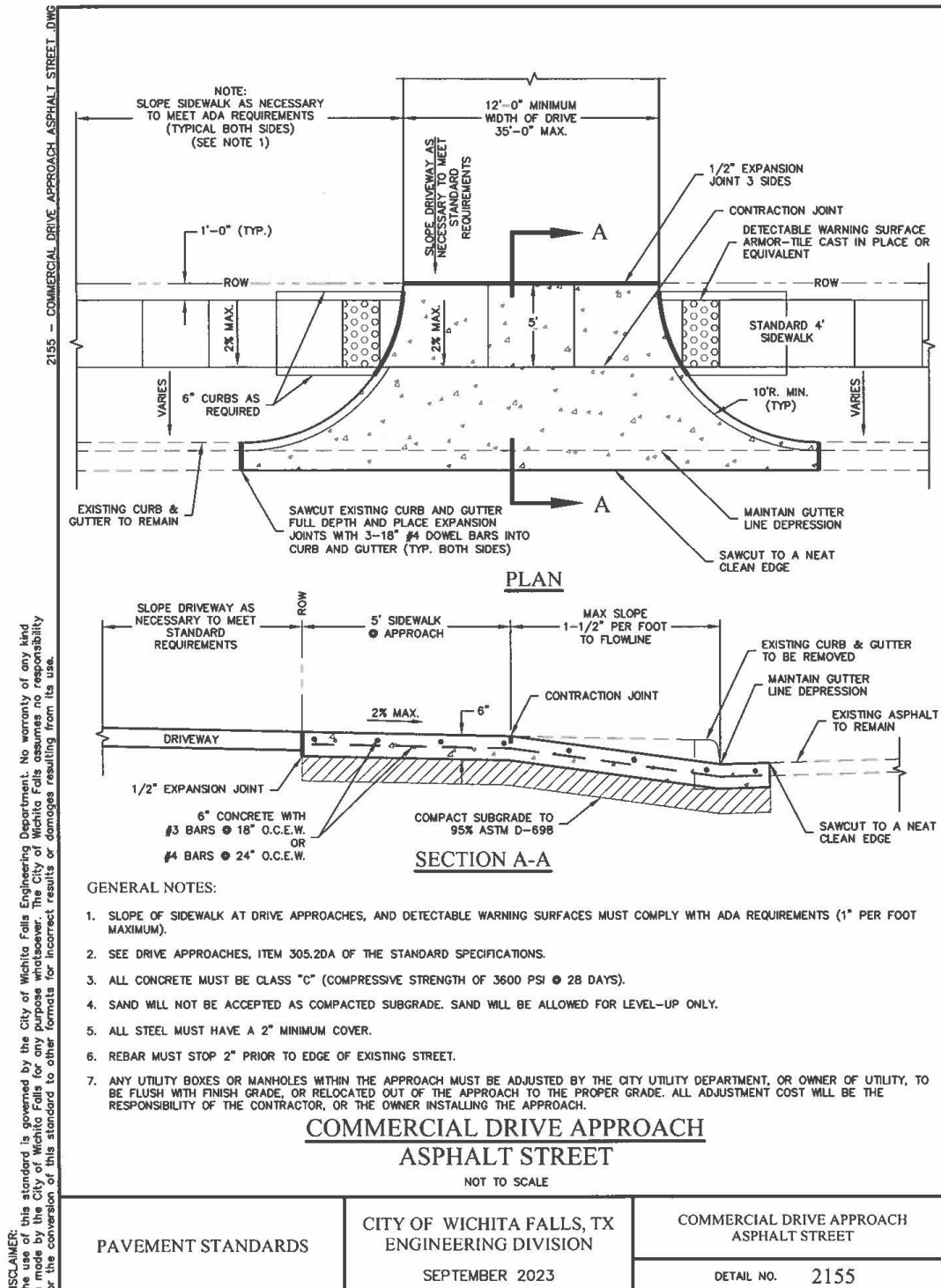
DISCLAIMER: The use of this standard is governed by the City of Wichita Falls Engineering Department. No warranty of any kind is made by the City of Wichita Falls for any purpose whatsoever. The City of Wichita Falls assumes no responsibility for the conversion of this standard to other formats for incorrect results or damages resulting from its use.





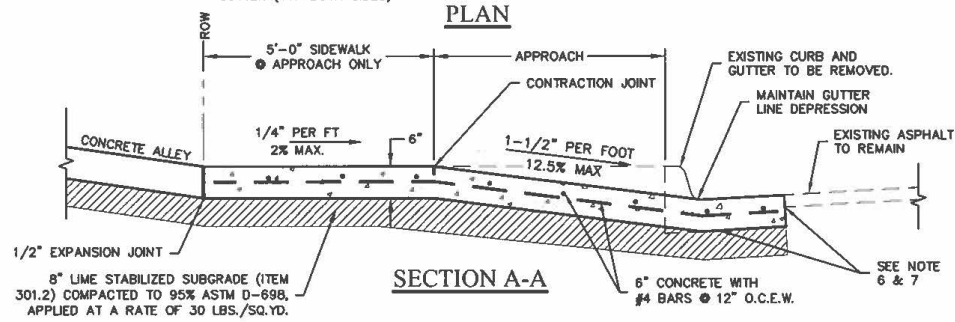
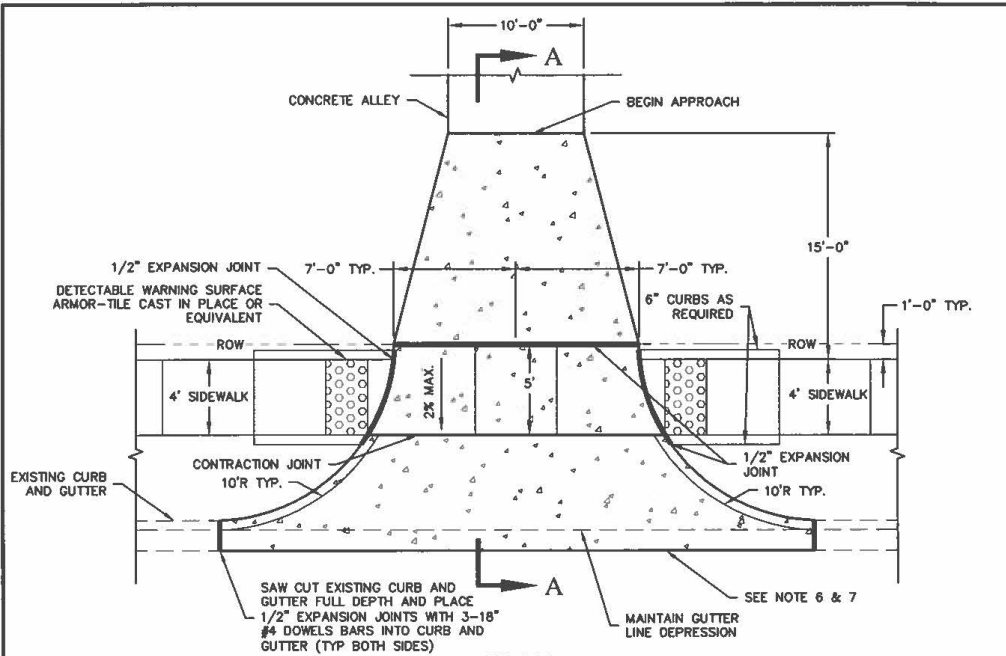






DISCLAIMER: The use of this standard is governed by the City of Wichita Falls Engineering Department. No warranty of any kind is made by the City of Wichita Falls for any purpose whatsoever. The City of Wichita Falls assumes no responsibility for the conversion of this standard to other formats for incorrect results or damages resulting from its use.

2160 - ALLEY APPROACH .DWG



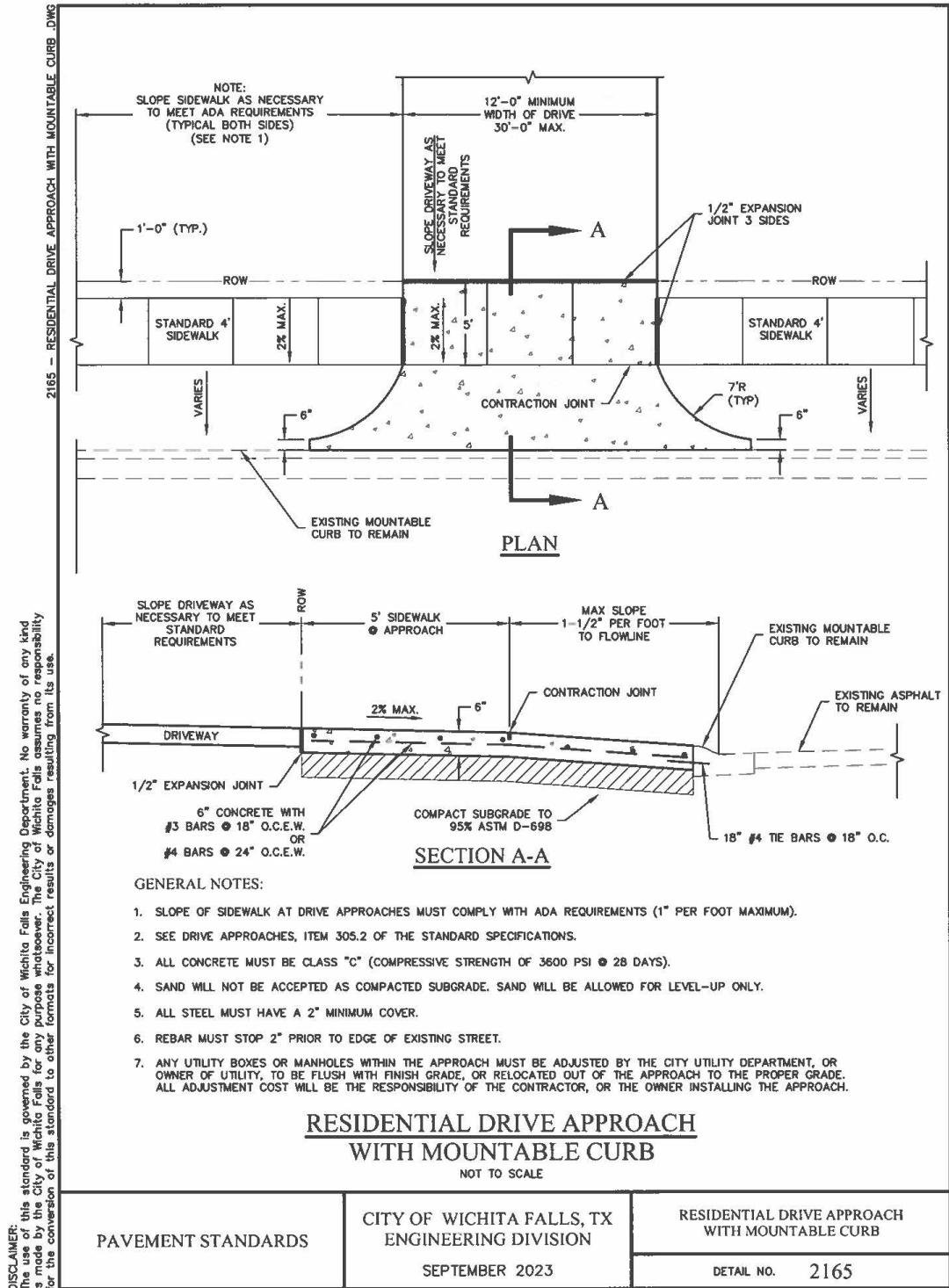
GENERAL NOTES:

1. ALL CONCRETE MUST BE CLASS "C" (COMPRESSIVE STRENGTH OF 3600 PSI @ 28 DAYS).
2. SEE DRIVE APPROACHES, ITEM 305.2 OF THE STANDARD SPECIFICATIONS.
3. ALL REINFORCING STEEL MUST HAVE A 2" MINIMUM COVER.
4. REFERENCE "PAVEMENT SECTION ALLEY DETAIL", FOR SUBGRADE PREPARATION REQUIREMENTS FOR ALLEY APPROACHES.
5. SAND WILL NOT BE ACCEPTED AS COMPACTED SUBGRADE. SAND WILL BE ALLOWED FOR LEVEL-UP ONLY.
6. FOR CONCRETE PAVEMENT:  
WHEN THE EXISTING CURB HAS BEEN PLACED MONOLITHIC WITH THE STREET PAVEMENT, SAW CUT THE STREET AT 12" FROM BACK OF CURB, FULL DEPTH, INSTALL 18", TIE BARS @ 18" O.C. INTO THE STREET.
7. FOR ASPHALT PAVEMENT:  
SAW CUT EXISTING PAVEMENT TO A NEAT, CLEAN EDGE.
8. SLOPE OF SIDEWALK AT DRIVE APPROACHES AND DETECTABLE WARNING SURFACES MUST COMPLY WITH ADA REQUIREMENTS (1" PER FOOT MAXIMUM).

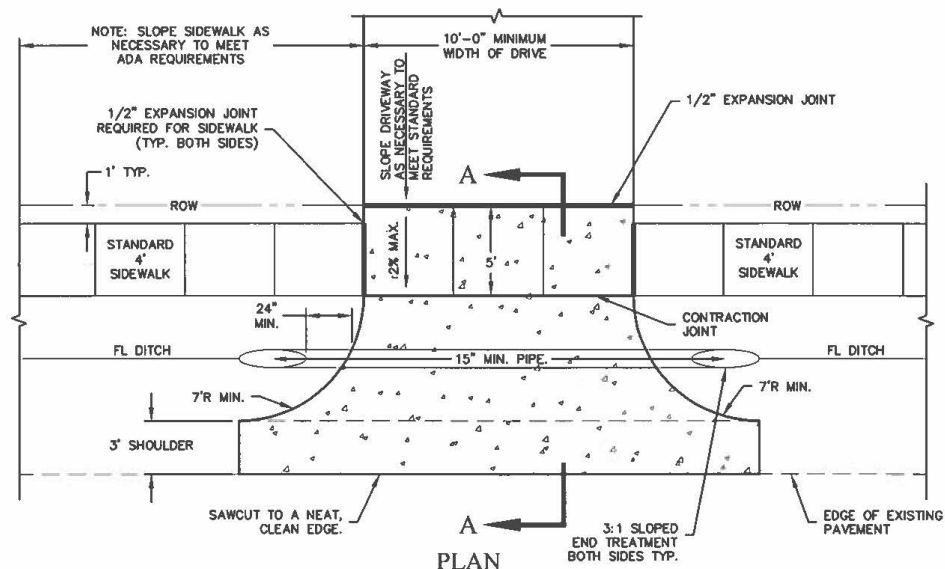
**ALLEY APPROACH**

NOT TO SCALE

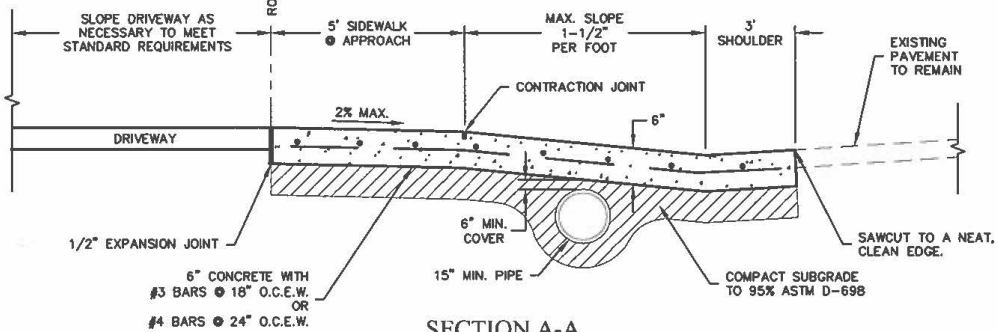
PAVEMENT STANDARDS	CITY OF WICHITA FALLS, TX ENGINEERING DIVISION SEPTEMBER 2023	ALLEY APPROACH DETAIL NO. 2160
--------------------	---	-----------------------------------



2170 - DRIVE APPROACH RURAL STREET .DWG



## PLAN



SECTION A-A

GENERAL NOTES:

1. SEE DRIVE APPROACHES, ITEM 305.2 OF THE STANDARD SPECIFICATIONS.
2. ALL CONCRETE MUST BE CLASS "C" (COMPRESSED STRENGTH OF 3600 PSI @ 28 DAYS).
3. SAND WILL NOT BE ACCEPTED AS COMPACTED SUBGRADE. SAND WILL BE ALLOWED FOR LEVEL-UP ONLY.
4. ALL STEEL MUST HAVE A 2" MINIMUM COVER.
5. DRAINAGE PIPE SIZE WILL BE MINIMUM 15" DIAMETER, OR AS DETERMINED BY CITY ENGINEER. DRAINAGE CONDITIONS MAY ALLOW A DIP IN DRIVEWAY WITHOUT PIPE.
6. ANY UTILITY BOXES OR MANHOLES WITHIN THE APPROACH MUST BE ADJUSTED BY THE CITY UTILITY DEPARTMENT, OR OWNER OF UTILITY, TO BE FLUSH WITH FINISH GRADE, OR RELOCATED OUT OF THE APPROACH TO THE PROPER GRADE. ALL ADJUSTMENT COST WILL BE THE RESPONSIBILITY OF THE CONTRACTOR, OR THE OWNER INSTALLING THE APPROACH.

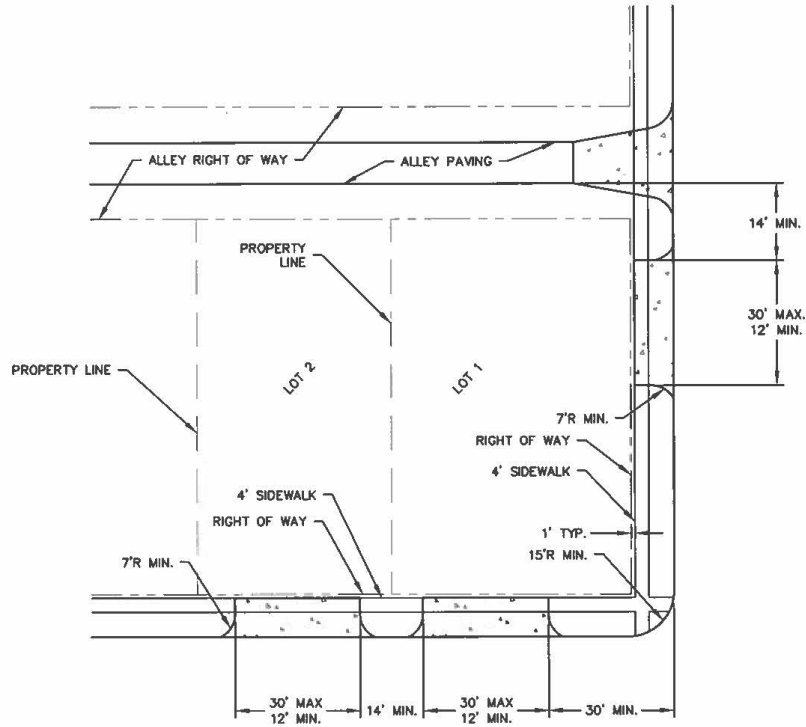
DRIVE APPROACH  
RURAL STREET

NOT TO SCALE

PAVEMENT STANDARDS	CITY OF WICHITA FALLS, TX ENGINEERING DIVISION  SEPTEMBER 2023	DRIVE APPROACH RURAL STREET
		DETAIL NO. 2170

NUMBER OF DRIVEWAY APPROACHES ALLOWED:

1. NOT MORE THAN TWO DRIVEWAY APPROACHES WILL BE PERMITTED ON ANY TRACT WITH A FRONTAGE OF 100 FEET OR LESS.
2. NOT MORE THAN THREE DRIVEWAY APPROACHES WILL BE PERMITTED ON ANY TRACT WITH FRONTAGE OF MORE THAN 100 FEET BUT LESS THAN 300 FEET.
3. NOT MORE THAN FOUR DRIVEWAY APPROACHES WILL BE PERMITTED ON ANY TRACT WITH A FRONTAGE OF MORE THAN 300 FEET BUT LESS THAN 600 FEET.
4. FOR TRACTS WITH FRONTAGE WITH EXCESS OF 600 FEET, ONE ADDITIONAL APPROACH MAY BE ALLOWED FOR EACH ADDITIONAL 300 FEET OF FRONTAGE IN EXCESS OF 600 FEET.



GENERAL NOTES:

1. AT STREET INTERSECTIONS, NO CURB CUT FOR A DRIVEWAY APPROACH WILL BE PERMITTED WITHIN 30 FEET OF THE EXTENDED CURBLINE.
2. ON INTERIOR LOTS, THE TANGENT POINT OF THE DRIVEWAY CURB AT THE STREET CURBLINE MUST NOT EXTEND BEYOND A PROPERTY LINE.
3. THE WIDTH OR THROAT OF A DRIVEWAY APPROACH MUST NOT BE GREATER THAN 30 FEET FOR RESIDENTIAL USES.

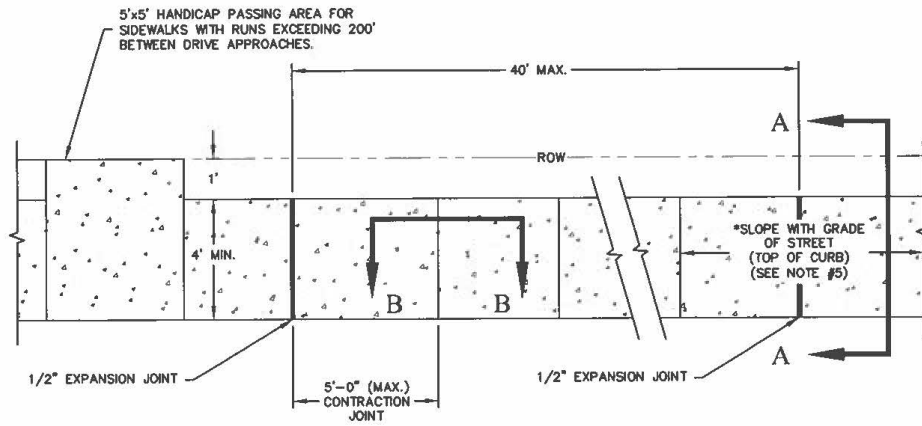
**RESIDENTIAL  
APPROACH LOCATIONS**

NOT TO SCALE

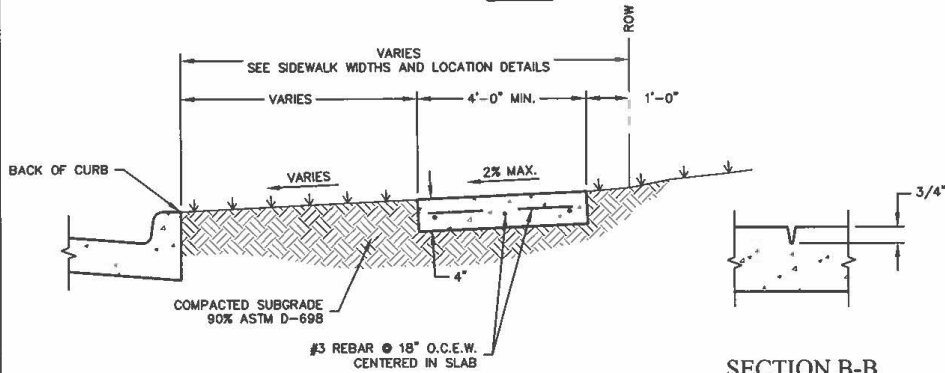
DISCLAIMER: The use of this standard is governed by the City of Wichita Falls Engineering Department. No warranty of any kind is made by the City of Wichita Falls for any purpose whatsoever. The City of Wichita Falls assumes no responsibility for the conversion of this standard to other formats for incorrect results or damages resulting from its use.

PAVEMENT STANDARDS	CITY OF WICHITA FALLS, TX ENGINEERING DIVISION SEPTEMBER 2023	RESIDENTIAL APPROACH LOCATIONS
		DETAIL NO. 2180

2200 - SIDEWALK.DWG



PLAN



SECTION A-A

SECTION B-B  
CONTRACTION JOINT

GENERAL NOTES:

1. SIDEWALK REINFORCING (EXCLUDING DRIVE APPROACHES) MUST BE #3 BARS @ 18" O.C.E.W. OR #4 BARS ON 24" O.C.
2. ALL CONCRETE MUST BE CLASS "C", (COMPRESSIVE STRENGTH OF 3,600 PSI. @ 28 DAYS.)
3. SAND WILL NOT BE ACCEPTED AS COMPACTED SUBGRADE. SAND WILL BE ALLOWED FOR LEVEL-UP ONLY.
4. ANY UTILITY BOXES OR MANHOLES WITHIN THE SIDEWALK MUST BE ADJUSTED BY THE CITY UTILITY DEPARTMENT, OR OWNER OF UTILITY, TO BE FLUSH WITH FINISH GRADE, OR RELOCATED OUT OF THE SIDEWALK TO THE PROPER GRADE. ALL ADJUSTMENT COST WILL BE THE RESPONSIBILITY OF THE CONTRACTOR, OR THE OWNER INSTALLING THE SIDEWALK.
5. CROSS SLOPE AT DRIVE APPROACHES AND RAMPS MUST COMPLY WITH ADA REQUIREMENTS. (1 INCH PER FOOT MAXIMUM)
6. IF SIDEWALK IS PLACED ADJACENT TO CURB, MINIMUM WIDTH SHALL BE 6'.
7. PLACE SIDEWALK 1' OFF ROW LINE. PROVIDE 5' MINIMUM WIDTH SIDEWALK IN COMMERCIAL AREAS WITH HEAVY PEDESTRIAN MOVEMENTS.
8. SIDEWALKS INSTALLED WITHIN TxDOT RIGHT OF WAY MUST BE A MINIMUM WIDTH OF 5' AND MEET REQUIREMENTS OF TxDOT PEDESTRIAN STANDARDS.

**SIDEWALK**

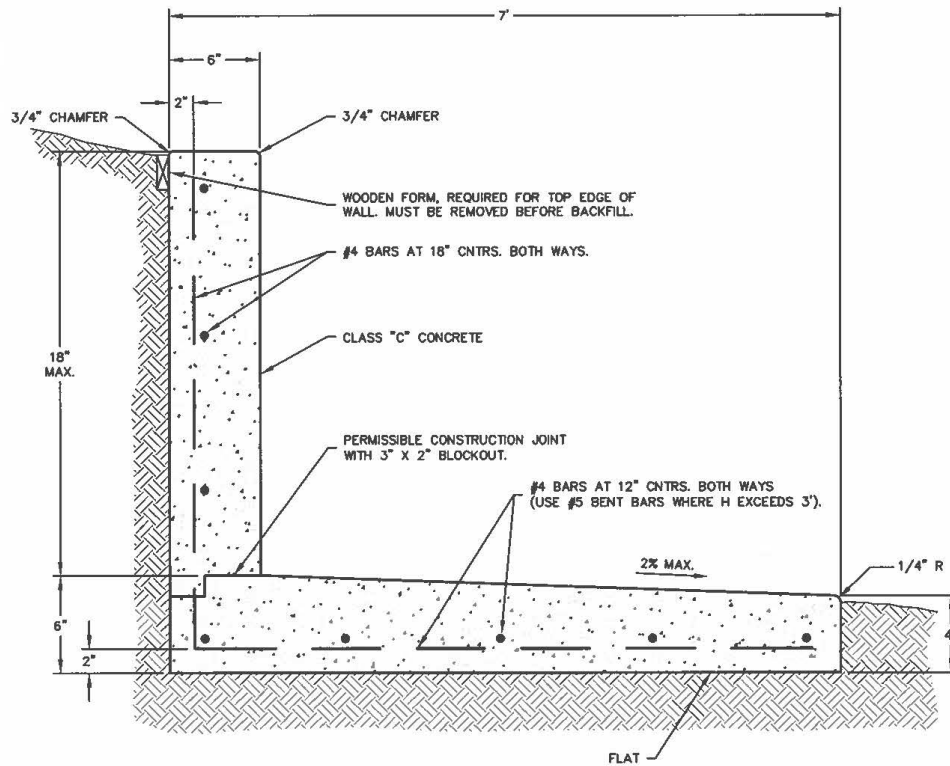
NOT TO SCALE

DISCLAIMER: this standard is governed by the City of Wichita Falls Engineering Department. No warranty of any kind is made by the City of Wichita Falls for any purpose whatsoever. The City of Wichita Falls assumes no responsibility for the conversion of this standard to other formats for incorrect results or damages resulting from its use.

PAVEMENT STANDARDS	CITY OF WICHITA FALLS, TX ENGINEERING DIVISION SEPTEMBER 2023	SIDEWALK
		DETAIL NO. 2200

2205 - SIDEWALK WITH 18" WALL.DWG

DISCLAIMER:  
The use of this standard is governed by the City of Wichita Falls Engineering Department. No warranty of any kind is made by the City of Wichita Falls for any purpose whatsoever. The City of Wichita Falls assumes no responsibility for the conversion of this standard to other formats for incorrect results or damages resulting from its use.



#### GENERAL NOTES:

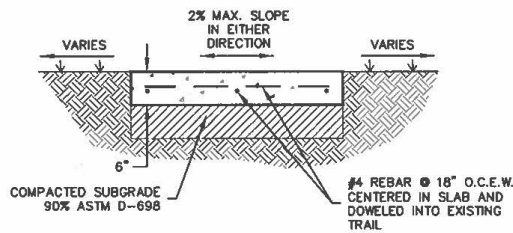
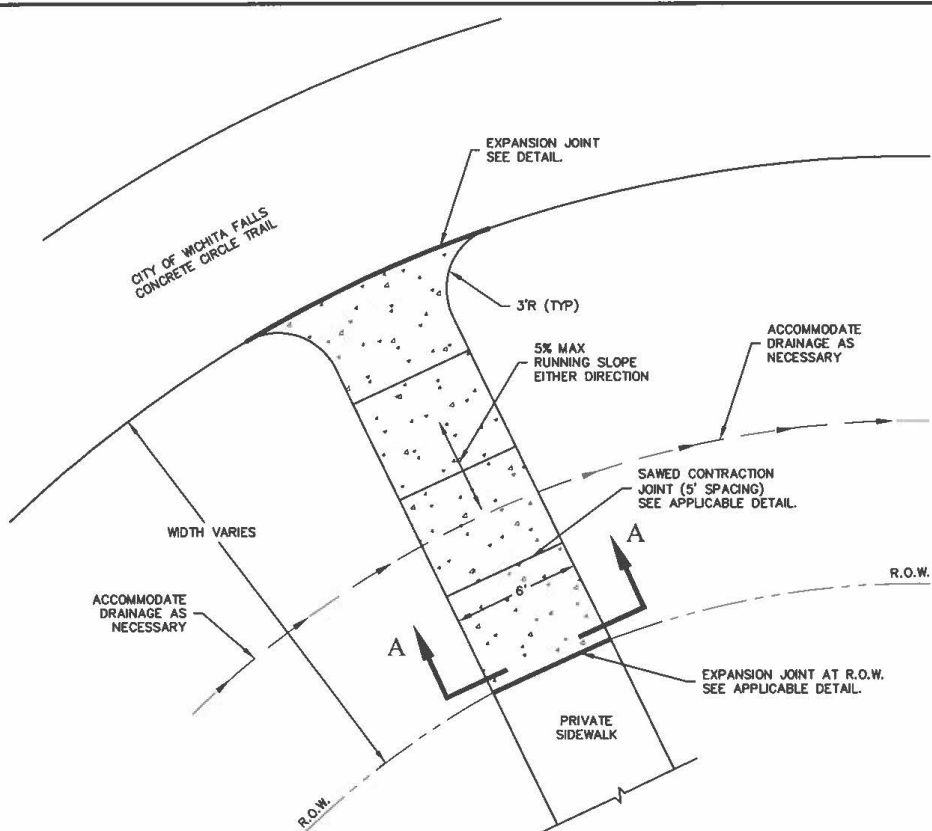
1. PROVIDE VERTICAL EXPANSION IN WALL AT 25' MAX. SPACING (USE EXPANSION JOINT DETAIL NO. 2051 WITH TXDOT TYPE A WATERSTOP AND MODIFY AS REQUIRED.)
2. WALL DESIGN ASSUMES NO SURCHARGE. A SPECIAL ENGINEERING ANALYSIS IS REQUIRED FOR OTHER CONDITIONS.
3. STRAIGHT, CLEAN EXCAVATION WALL MAY BE USED AS FORM ON BACK OF WALL. A WOODEN FORM IS REQUIRED FOR TOP EDGE OF WALL. IF BACK SIDE OF WALL DOES NOT USE EXISTING SOIL AS A FORM, BACKFILL BEHIND WALL IN 8" LIFTS COMPACTING TO 95% PER ASTM D-698.

### SIDEWALK WITH 18" RETAINING WALL

NOT TO SCALE

PAVEMENT STANDARDS	CITY OF WICHITA FALLS, TX ENGINEERING DIVISION SEPTEMBER 2023	SIDEWALK WITH 18" RETAINING WALL
		DETAIL NO. 2205

DISCLAIMER:  
The use of this standard is governed by the City of Wichita Falls Engineering Department. No warranty of any kind is made by the City of Wichita Falls for any purpose whatsoever. The City of Wichita Falls assumes no responsibility for the conversion of this standard to other formats for incorrect results or damages resulting from its use.



**SECTION A-A**

**CIRCLE TRAIL CONNECTION**

NOT TO SCALE

**GENERAL NOTES:**

1. APPROVAL REQUIRED FROM PARKS AND RECREATION FOR THE CIRCLE TRAIL CONNECTION, CONTACT PARKS AND RECREATION AT 940-761-7490.
2. ENCROACHMENT AGREEMENT REQUIRED FOR THE CIRCLE TRAIL CONNECTION, CONTACT PROPERTY MANAGEMENT AT 940-761-8816.
3. TRAIL CONNECTION MUST BE MADE AS PERPENDICULAR TO EXISTING TRAIL AS POSSIBLE.
4. SIDEWALK REINFORCING SHALL BE #4 BARS @ 18" O.C.E.W. AND DOWELED INTO EXISTING TRAIL.
5. ALL CONCRETE MUST BE CLASS "C", (COMPRESSIVE STRENGTH OF 3,600 PSI. @ 28 DAYS.)
6. SAND WILL NOT BE ACCEPTED AS COMPACTED SUBGRADE. SAND WILL BE ALLOWED FOR LEVEL-UP ONLY.
7. INSTALLATION MAY REQUIRE PIPE AND DITCH WORK TO ACCOMMODATE DRAINAGE.

PAVEMENT STANDARDS

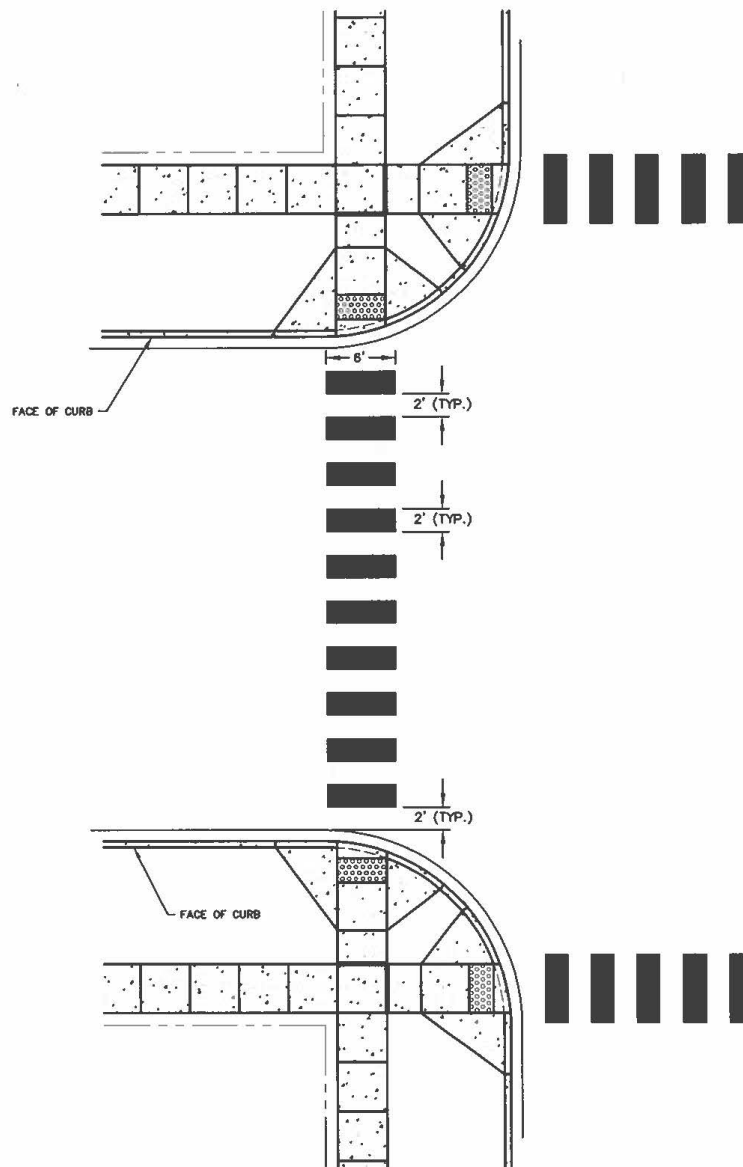
CITY OF WICHITA FALLS, TX  
ENGINEERING DIVISION

SEPTEMBER 2023

CIRCLE TRAIL CONNECTION

DETAIL NO. 2210





### CROSSWALK STRIPING PLAN

NOTE:

NOT TO SCALE

1. STRIPING MUST BE WHITE, 100 MIL THICK HOT APPLIED THERMOPLASTIC WITH DROP-ON GLASS TRAFFIC BEADS OR TYPE C PREFABRICATED PAVEMENT MARKINGS. MATERIAL, SURFACE PREPARATION, SEALER, AND INSTALLATION OF CROSSWALK PAVEMENT MARKINGS MUST BE IN ACCORDANCE WITH ITEMS 666, 668, AND 678 OF TXDOT STANDARD SPECIFICATION FOR CONSTRUCTION AND MAINTENANCE OF HIGHWAYS, STREETS AND BRIDGES.

DISCLAIMER:  
The use of this standard is governed by the City of Wichita Falls Engineering Department. No warranty of any kind is made by the City of Wichita Falls for any purpose whatsoever. The City of Wichita Falls assumes no responsibility for the conversion of this standard to other formats for incorrect results or damages resulting from its use.

PAVEMENT STANDARDS

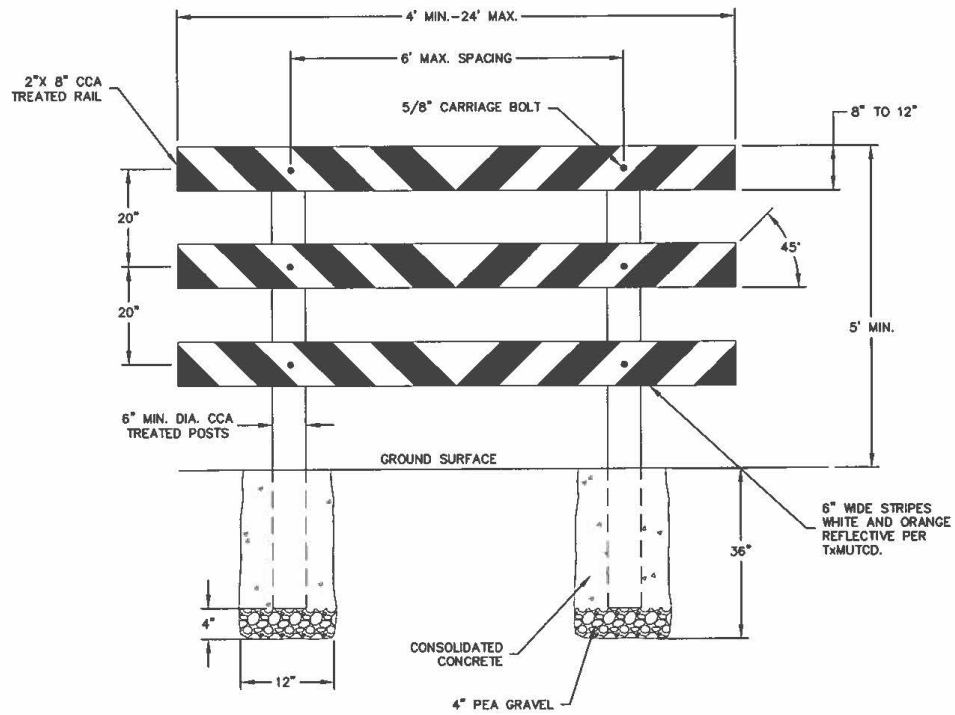
CITY OF WICHITA FALLS, TX  
ENGINEERING DIVISION

SEPTEMBER 2023

CROSSWALK STRIPING PLAN

DETAIL NO. 2400

DISCLAIMER: The use of this standard is governed by the City of Wichita Falls Engineering Department. No warranty of any kind is made by the City of Wichita Falls for any purpose whatsoever. The City of Wichita Falls assumes no responsibility for the conversion of this standard to other formats for incorrect results or damages resulting from its use.



NOTE:

1. STRIPES ON BARRICADE SHALL BE ALTERNATING WHITE AND ORANGE RETROREFLECTIVE SHEETING WITH STRIPES SLOPING DOWNWARD AT AN ANGLE OF 45 DEGREES IN THE DIRECTION ROAD USERS ARE TO PASS. BARRICADE SHALL BE CONSTRUCTED AND INSTALLED IN ACCORDANCE WITH THE T&MUTCD.

**DEAD END STREET  
TYPE III BARRICADE DETAIL**  
NOT TO SCALE

PAVEMENT STANDARDS	CITY OF WICHITA FALLS, TX ENGINEERING DIVISION  SEPTEMBER 2023	DEAD END STREET TYPE III BARRICADE DETAIL
		DETAIL NO. 2410