



Department of Development Services

Planning Division

1300 7th Street, PO Box 1431

Wichita Falls, TX 76307

(940) 761-7451

This City Development Interactive Map shows layers of information updated daily from the Wichita Appraisal District and maintained by numerous City departments. The following is a manual of the features available and how to use them to better learn about property development options. The manual covers each element by topic and is expanded upon in the following manual:

Index

Section 1 Acknowledgement

Section 2 Address Search

Section 3 Property Search by Owner

Section 4 Property Search by Property ID or Account Number

Section 5 Pan and Zoom

Section 6 Turning on/off Information (Layers)

Section 7 Legend

Section 8 Measure Tool

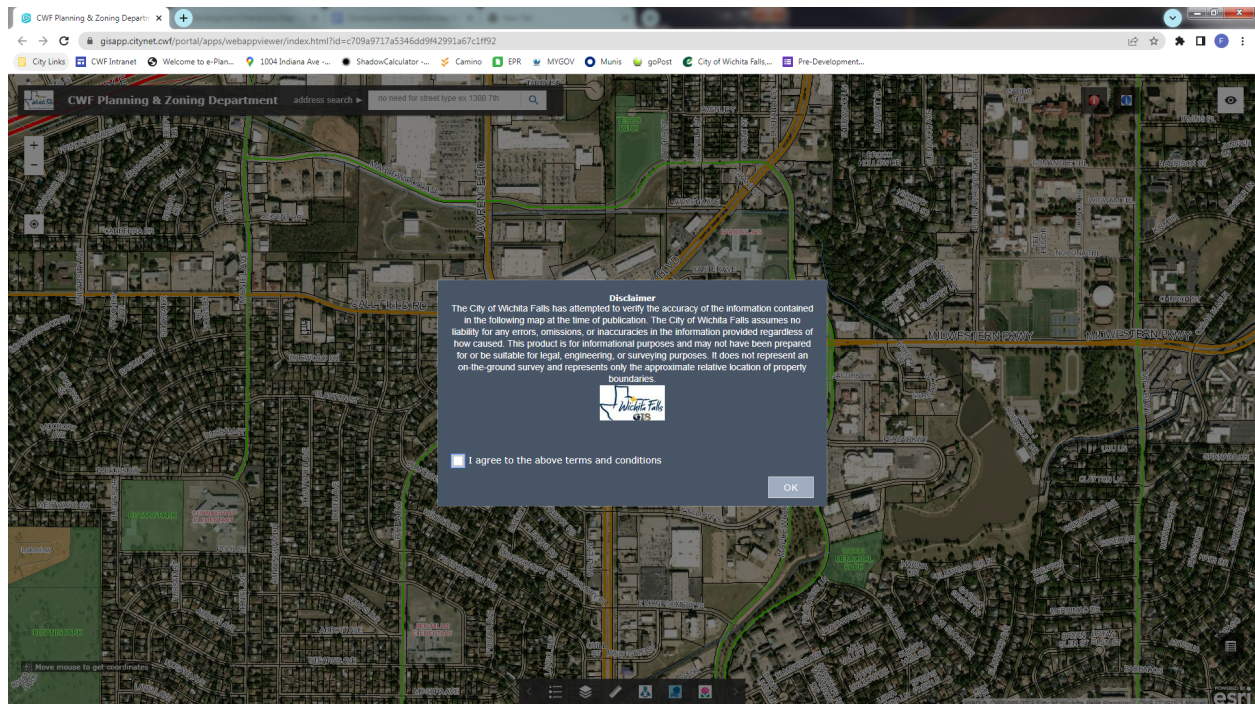
Section 9 Search for Schools, Parks, and Cemeteries by Name

Section 10 Data Selection & Identification Popup

Section 11 Additional Information & Contact

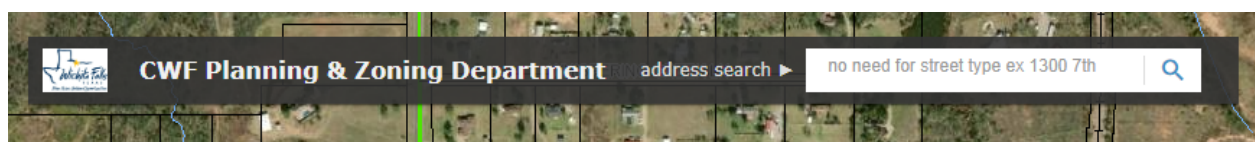
1. Acknowledgment

The webpage will open an acknowledgment notice whenever the Interactive Map is accessed. Please read and understand the statement before clicking OK “I agree to the above terms and conditions.” The message indicates staff made all efforts to provide the most accurate information. However, it should not be used or replace legal, engineering, or surveying processes and documents.

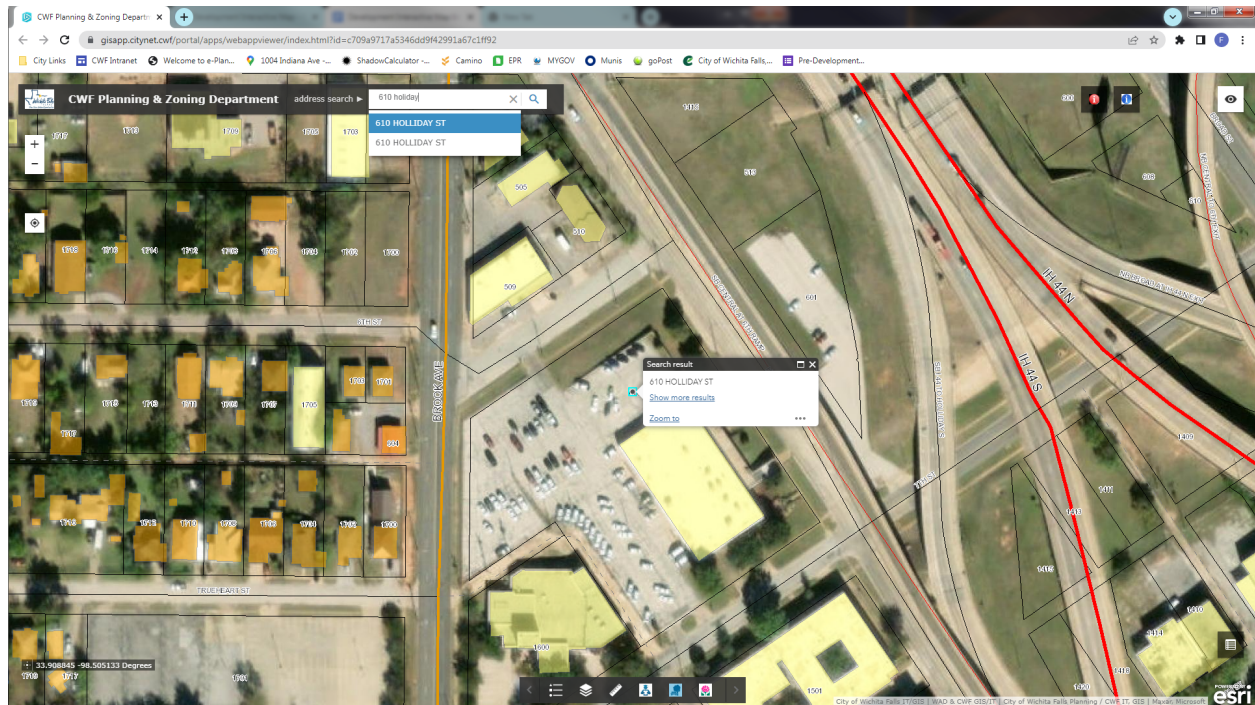


2. Address Search

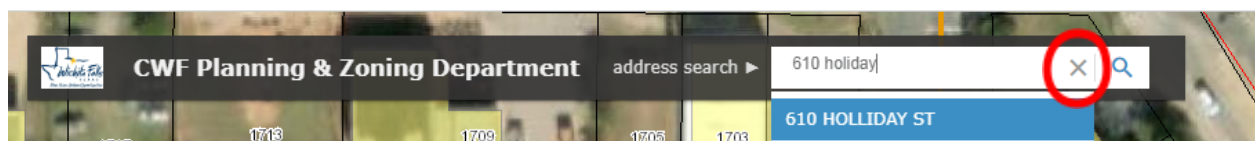
The address search tool is in the interactive map's top left corner. To look up an address, please simply input the street number followed by the street name. The user can exclude the street type (e.g., Street, Court, Boulevard). The address search will also locate misspelled street names similar to the correct street spelling.



Simply input the address (for example, 610 Holliday) and enter. The found address will automatically zoom to that location. Please note in the model, the street name, Holliday, is misspelled, and the street type is not included.

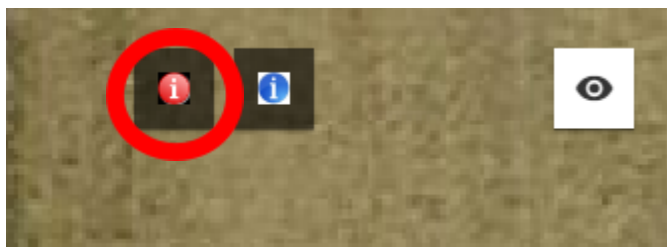


You can remove your search by clicking “X” in your query.

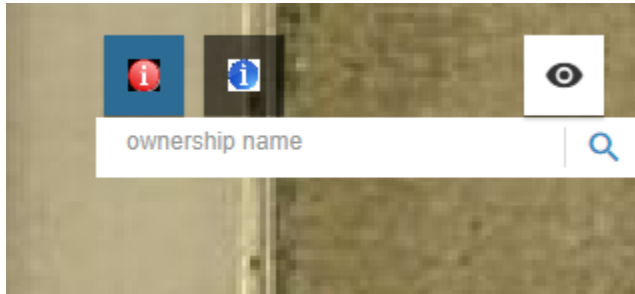


3. Property Search by Owner

If an address is unknown, the users can search for properties by the owner's name. The tool is located in the top right corner of the interactive map, as shown below:

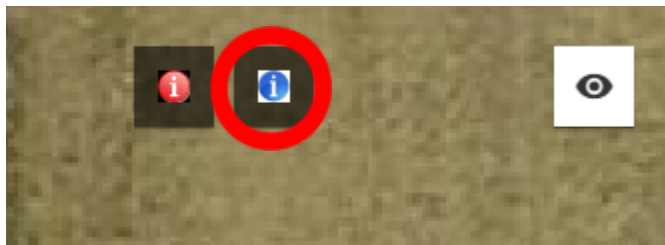


Once the button is clicked, a search field will appear. This feature will allow users to search for properties by the owner's name.

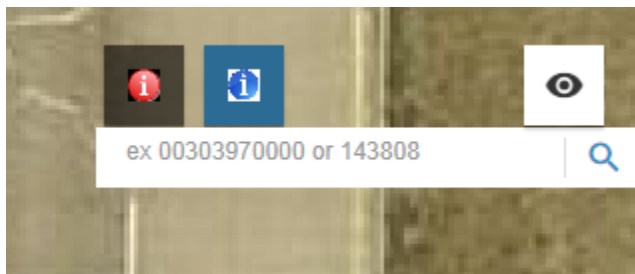


4. Property Search by Parcel ID or Account Number

The third option to search for properties is by Property ID or Account Number. Undeveloped properties are more common to have only a Property ID or Account Number listing from the Wichita County Appraisal District/ Wichita County Tax Office. These undeveloped properties typically have yet to be issued an official address. The tool can be located in the top right corner of the interactive map, as seen below.



Once the button is clicked, a search field will appear. This tool will allow users to search for properties by account number or property ID.



5. Pan and Zoom

To pan the map, simply click and hold your left mouse button while moving your map.

To Zoom in and out, users can simply use the wheel on their mouse, rolling forward to zoom in and backward to zoom out.

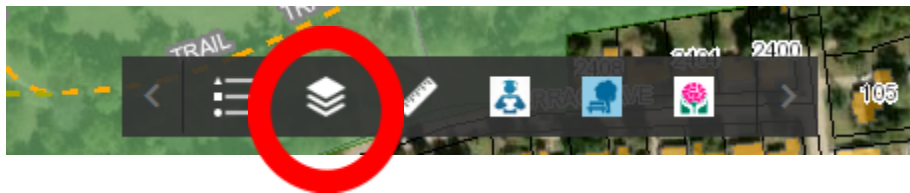
You can also click the + - located in the upper left-hand corner.



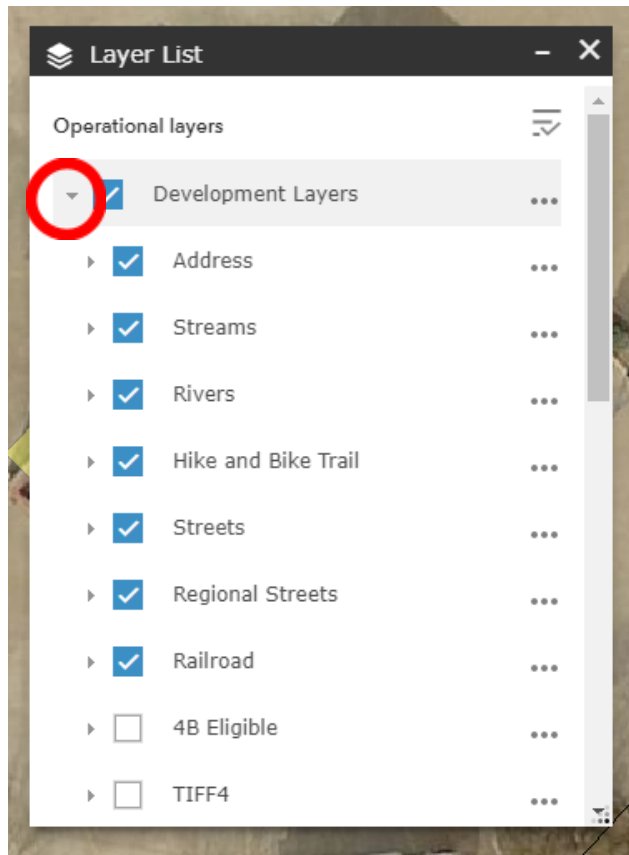
6. Turning off / on Information (Layers)

The data, also known as layers, is overlaid atop a map of the City. Users can activate multiple layers to display various data sets simultaneously. For example, the Historic District can be overlaid with a floodplain to determine if a historic property lies within a floodplain.

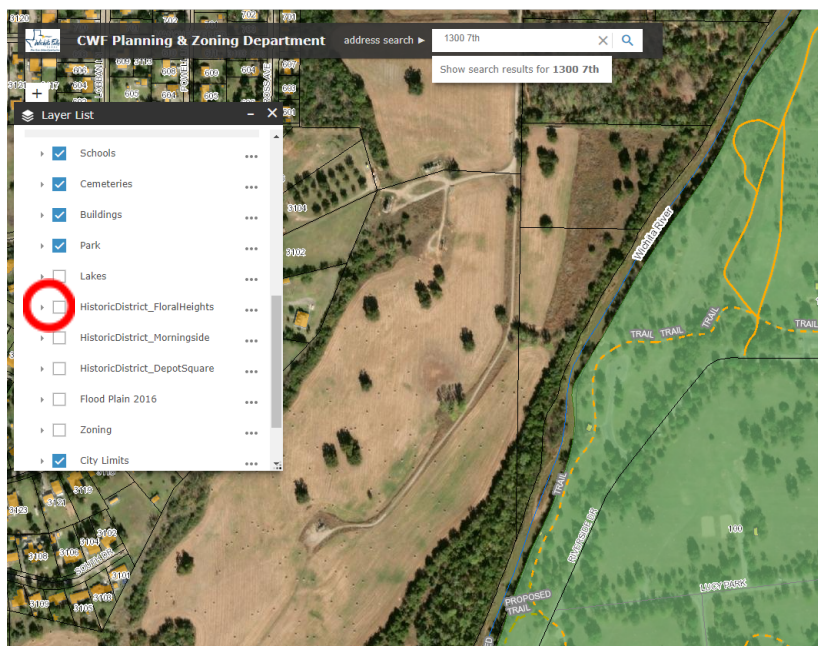
To turn the layer on / off, simply use the layer list at the bottom of the page.



A pop-up window with the available layers to turn on/off will appear. Most layers will appear under the Development Layers tab, which the user can expand by clicking on the triangle next to the layer. As you can see from the picture below, some of the features will automatically be enabled.

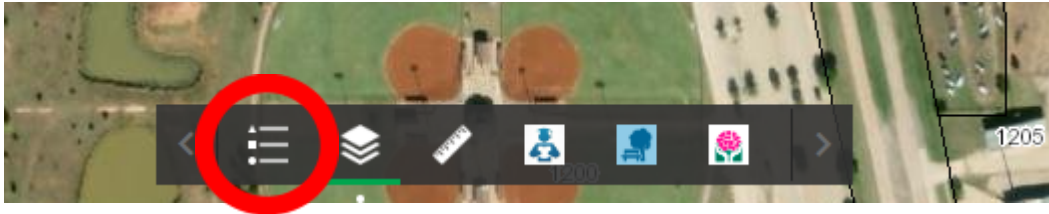


The user must add other features to meet the user's desired display information. Click the box next to the layer name to add or remove a layer from the map. A checked box next to a layer indicates that it is active and being displayed.

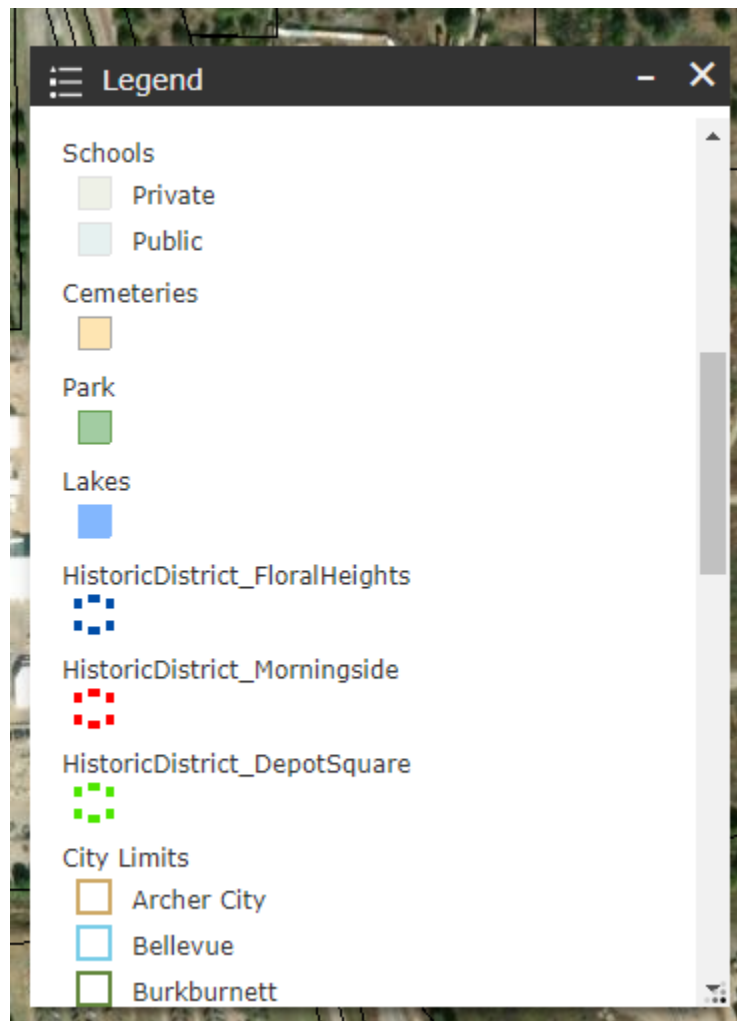


7. Legend

A legend is a table that will display each active layer and the symbols associated to identify that layer. To be able to view the Legend simply click in the bottom box as shown below.



Please note that you can use the slider bar to move up or down. Also, be aware that the legend will only show what features are turned on.

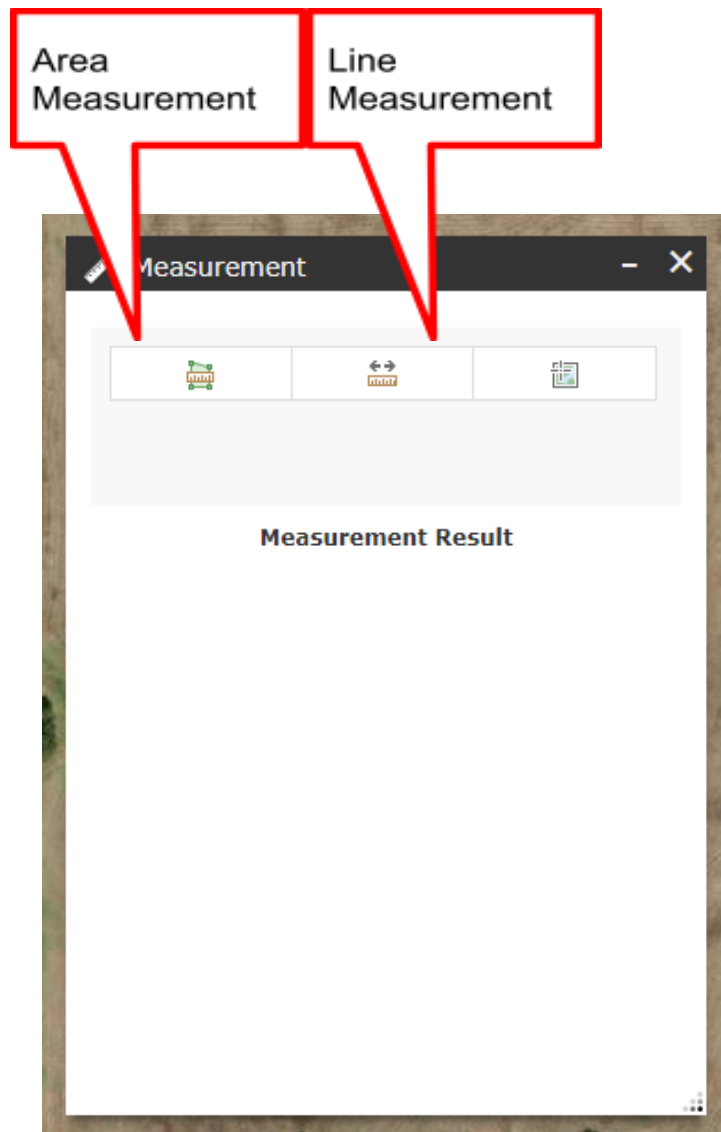


8. Measure

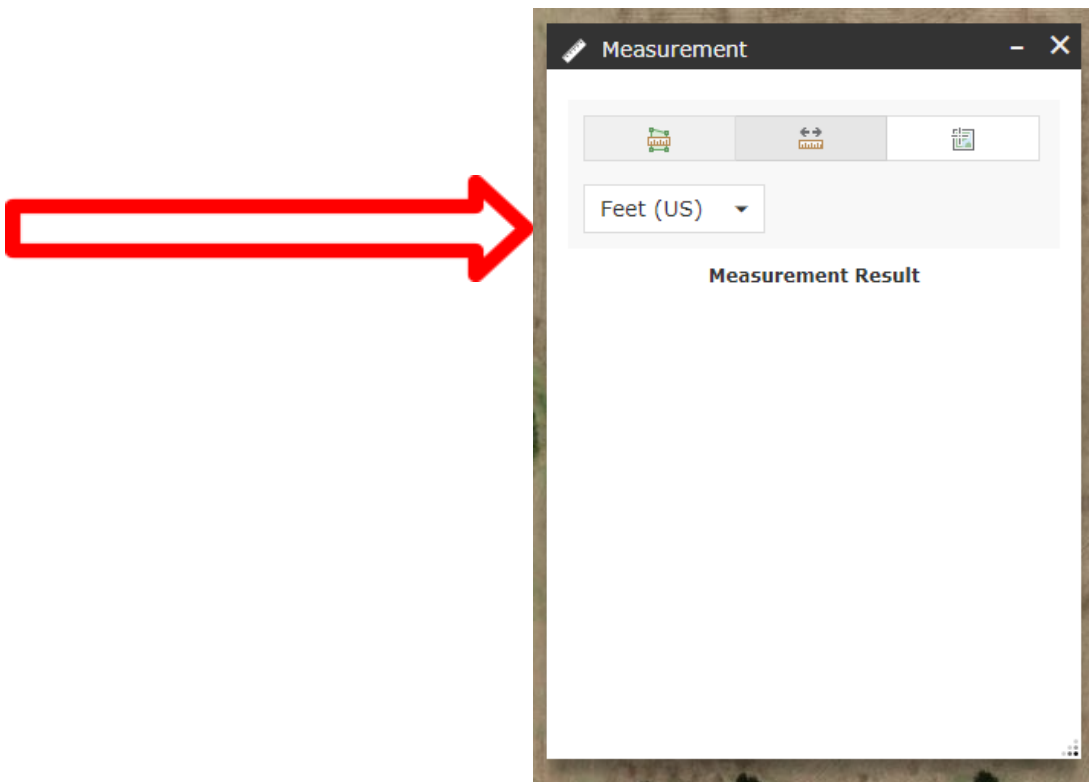
The users can find the measuring tool at the bottom of the page.



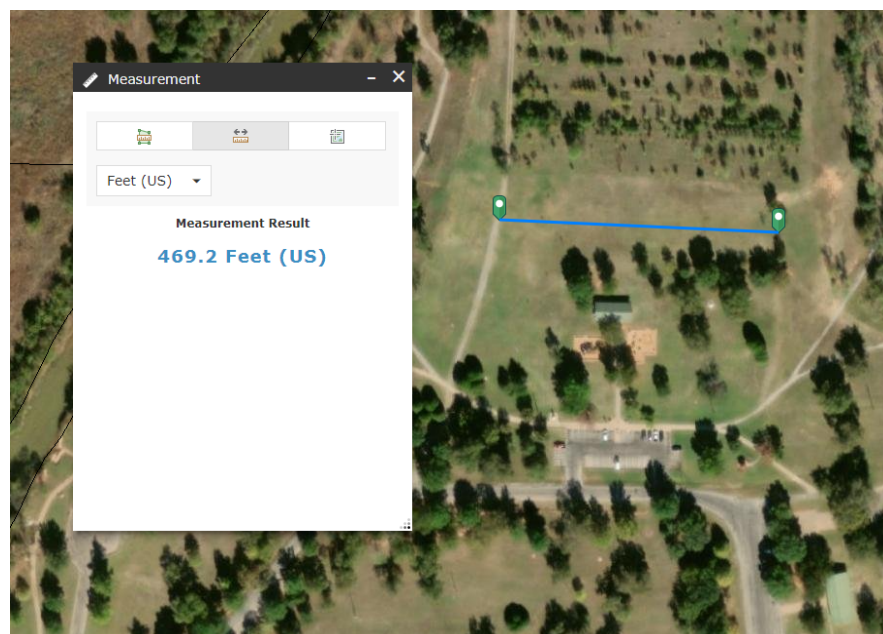
In the following popup window, the user can select either area or line measurements in the following popup window.

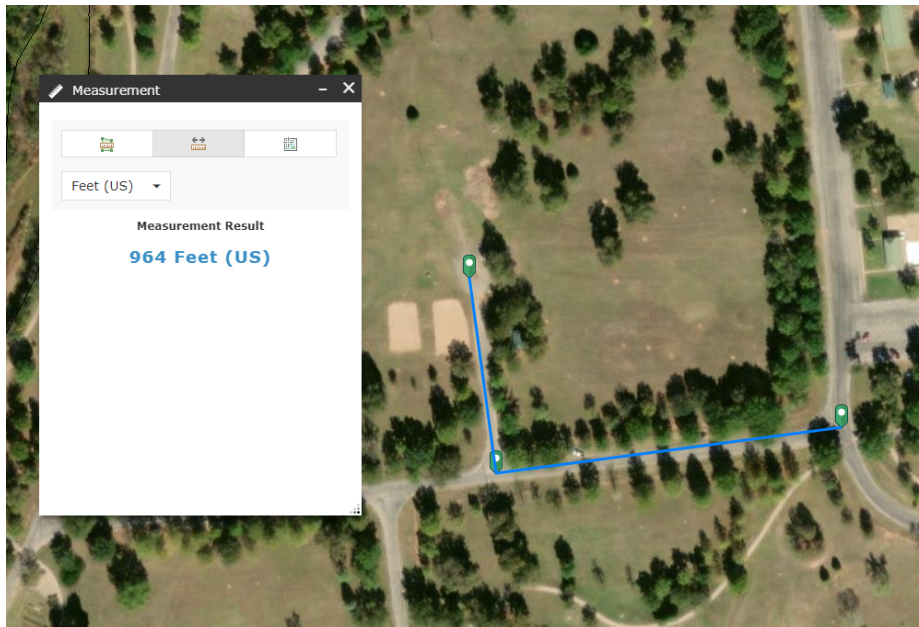


For a line measurement, simply click on the middle button. The line measurement tool will default to measurements in feet. Users can change the standard measuring metric by selecting the drop-field under the Line Measurement button.

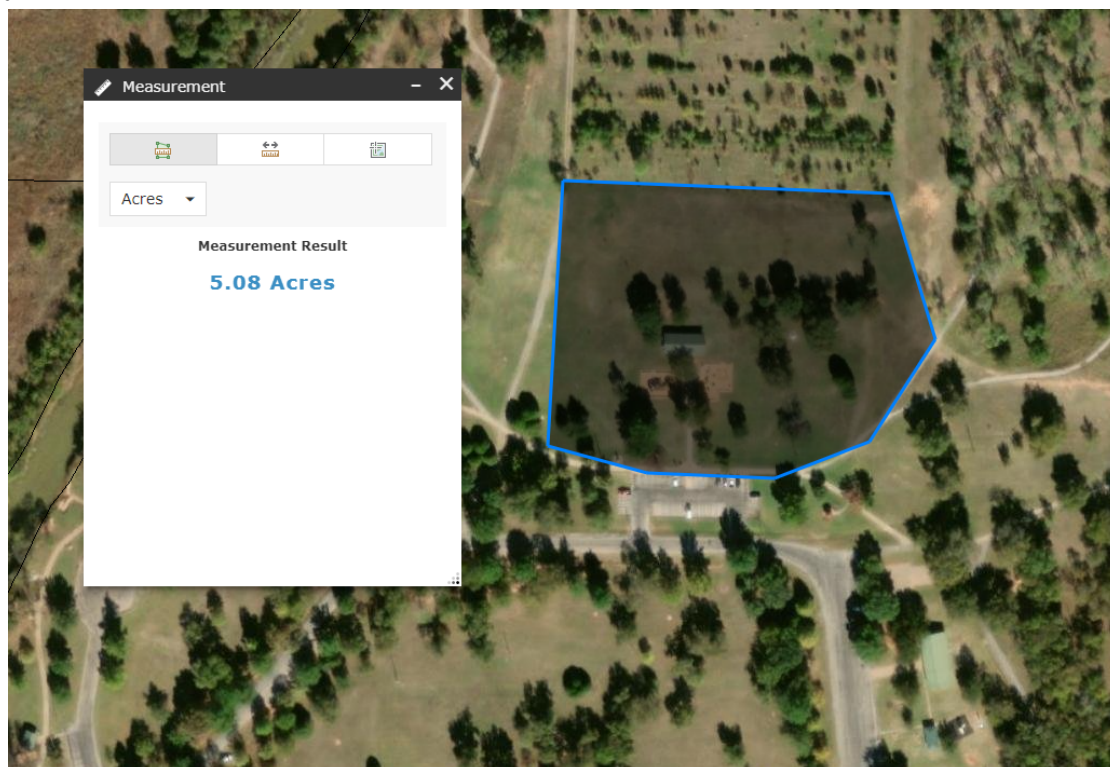


Then click at your starting point and double-click your ending point, as shown below. Users can use this tool to measure a line with direction changes or corners. After the first click for the starting point, continue to single click for each segment or change direction until double clicking the endpoint. This measurement will give the whole line's distance, not individual segments.

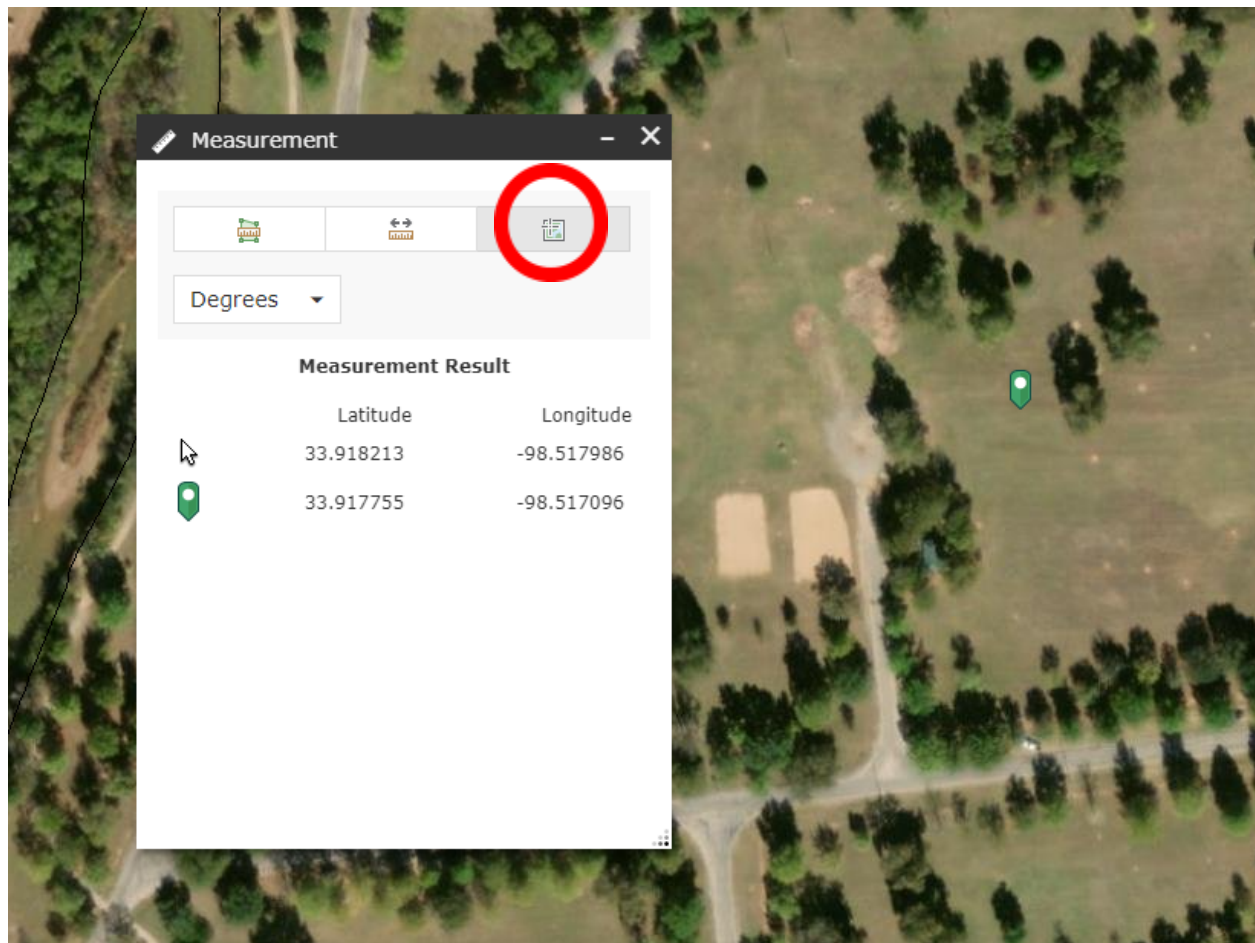




Users can measure the area by clicking the button on the left. The default measurement is in acres, but Users can change the unit of measurement by using the drop-down field. Click at a starting point, click at every change of the outlining shape, double-click when finished, and note your total area in the measurement window.

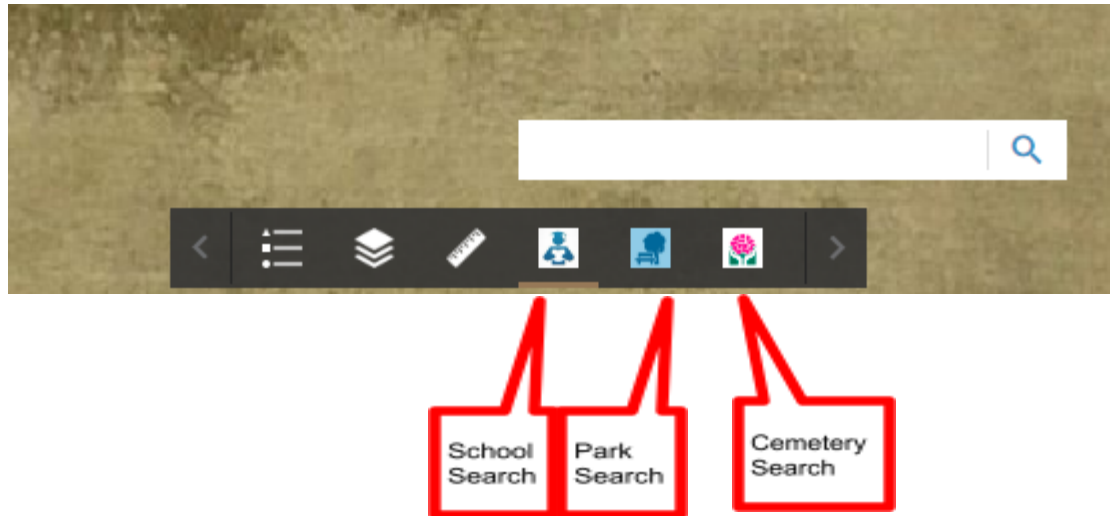


The measuring tool has one last feature, which will provide the longitude and latitude of a selected pinpoint. Like the other measuring features, the output will default to Decimal Degrees. Still, the dropdown field can change to Degrees Minutes Seconds.



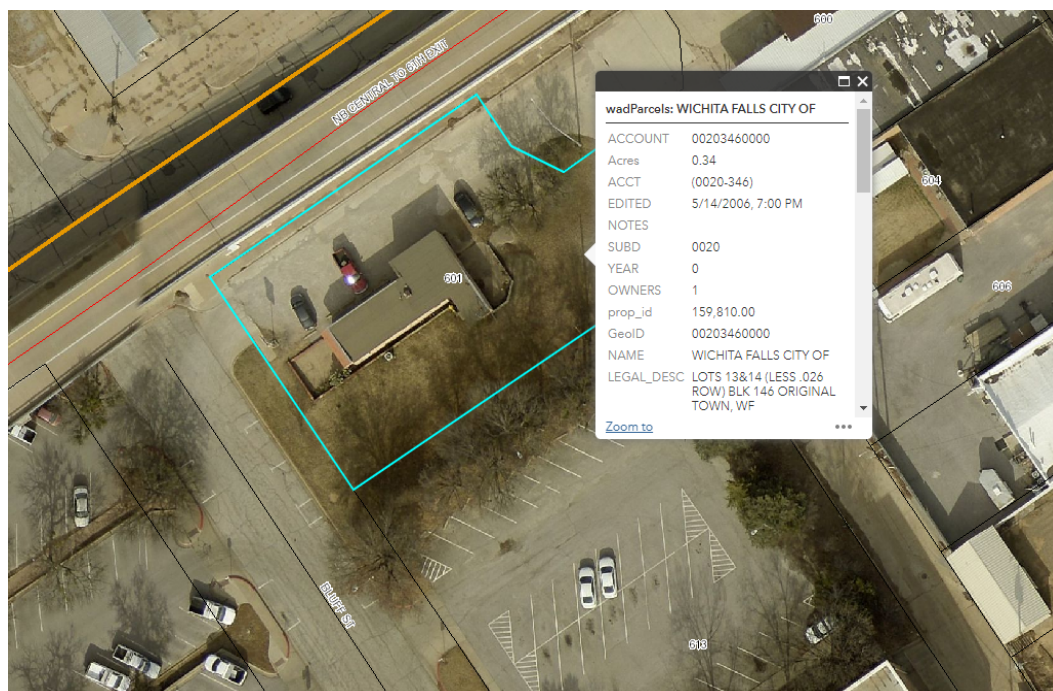
9. Search for Schools, Parks, and Cemeteries by Name

The Development Interactive Map allows users to search for schools, parks, and cemeteries by name. The three icons for each search are located at the bottom of the map. Once one of the icons is selected, a search field will appear for the entry to be made.

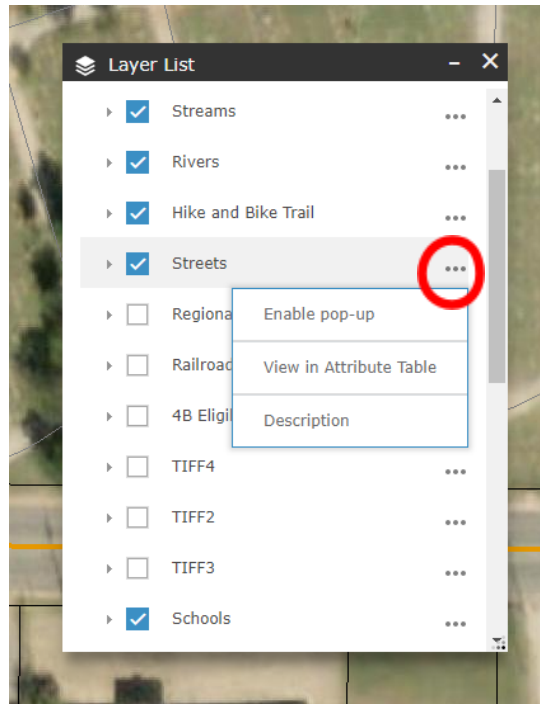


10. Data Selection & Identification Popup

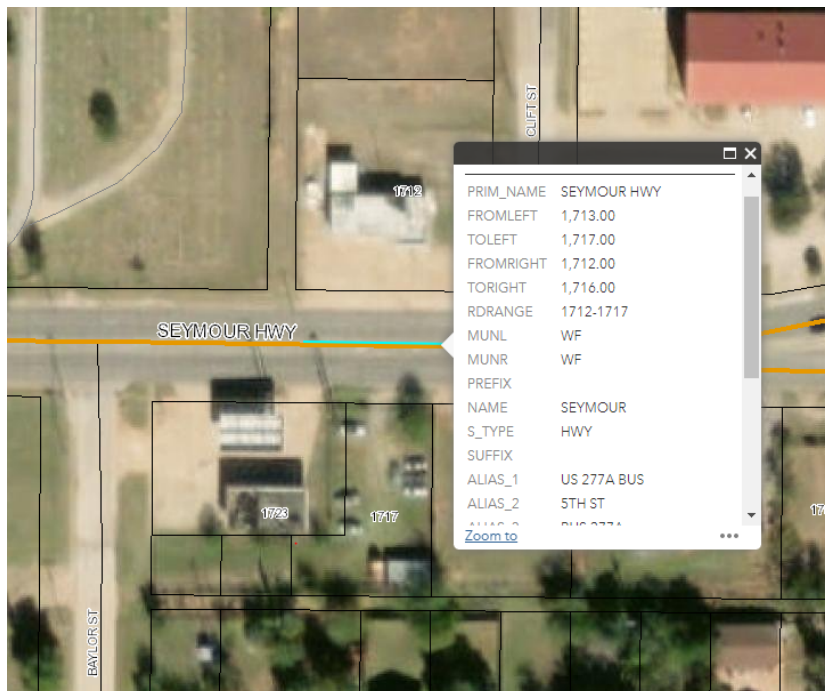
A few of the layers include what is known as metadata, which is information associated with the geographic drawing. For instance, each lot of the parcel layer consists of the property owner's name, mailing address, a property legal description, acreage, property type, the year the structure was built, structure square footage, and market value. The parcel data is activated as a default for data selection/identification (pop-up). To select a lot, simply left-click on the parcel to see the results.



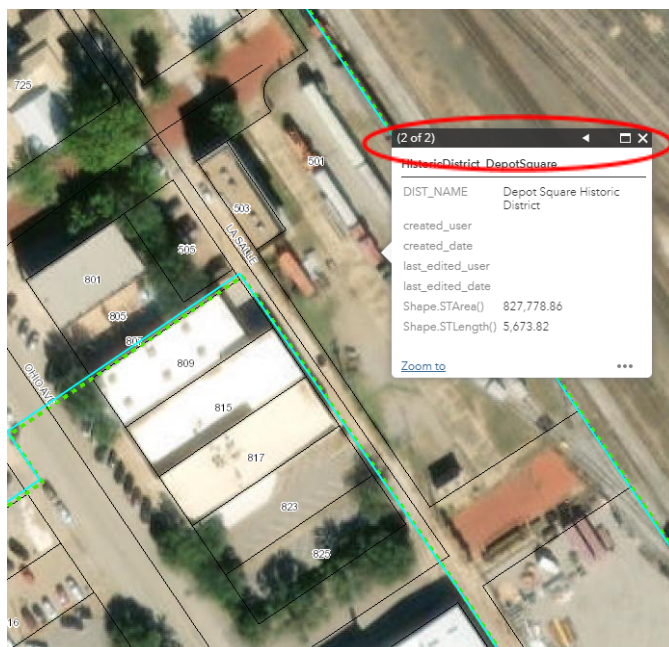
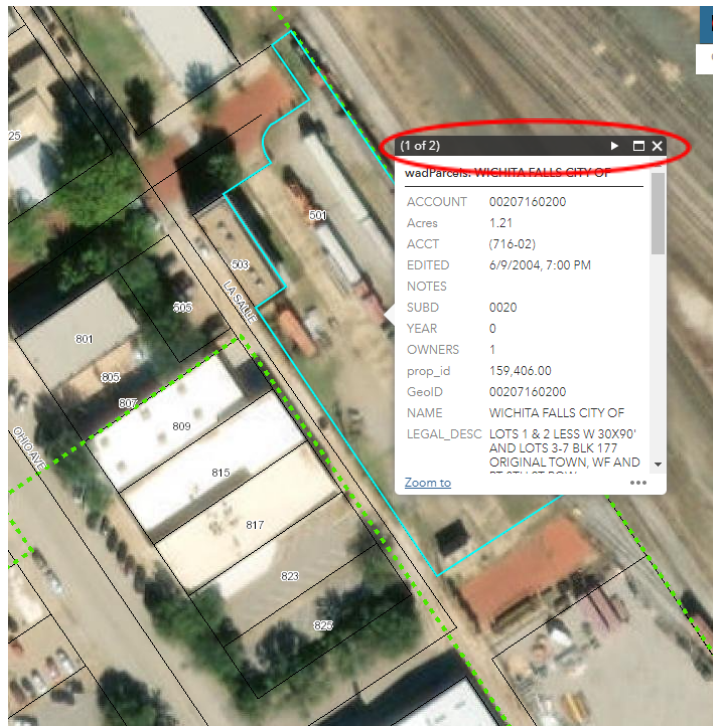
Users can set up any data sets or layers with metadata to display the information of a selected item. The user can enable the popup feature by selecting the menu button for a particular layer. In this example, the metadata for the street layer will be enabled.



Each layer has its unique metadata volume, with some layers more robust than others. The streets layer has additional information, including the street name, address range for the block selected, and any alternate names for the street.



The interactive map can have multiple selections displayed in a single popup. For example, a user could have the parcel data (for ownership), and a historic district enabled for pop-ups. With the selection of a parcel, the interactive map will display both layers' metadata in one popup. The new window will show an arrow in the upper right-hand corner (1 of 2) to switch between the two layers selected.



11. Additional Information & Contact

Staff put this manual together to give users the basic concepts needed to utilize the Development Interactive Map. Staff will update the map frequently and add new layers to expand the user experience. If you have any additional questions on the map usage or the development process, please contact the Planning Office with any requests or questions.

Planning Division

Cedric Hu, Planner I

cedric.hu@wichitafallstx.gov

940/761-7451